

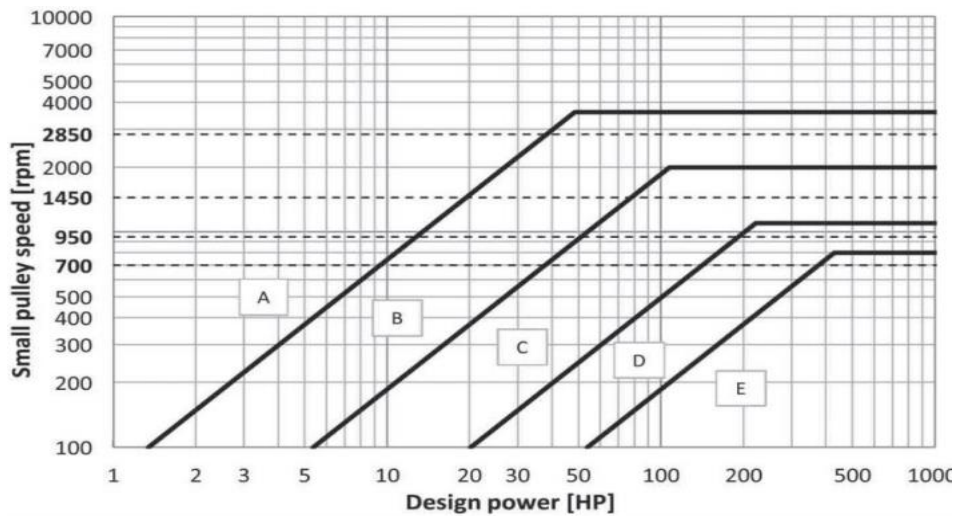
## Lampiran 1

### 1. Tabel factor layanan perancangan transmisi sabuk-v (Mott, 2009)

| Jenis mesin yang digerakkan   | Jenis penggerak  |             |            |  |             |            |
|---|--|-------------|------------|--|-------------|------------|
|   | Motor AC: Torsi normal <sup>a</sup><br>Motor DC: Lilitan Shunt<br>Motor bakar: Multisilinder |             |            | Motor AC: Torsi tinggi <sup>b</sup><br>Motor DC: lilitan seri, lilitan kompon<br>Motor bakar: 4 silinder atau kurang |             |            |
|   | <6 jam/hr  | 6-15 jam/hr | >15 jam/hr | <6 jam/hari  | 6-15 jam/hr | >15 jam/hr |
| Pengaduk, blower, kipas angin, pompa sentrifugal, konveyor tugas ringan | 1,0  | 1,1         | 1,2        | 1,1  | 1,2         | 1,3        |
| Generator, mesin perkakas, mesin pengaduk, konveyor batu kerikil        | 1,1  | 1,2         | 1,3        | 1,2  | 1,3         | 1,4        |
| Elevator bak, mesin tekstil, mesin penggiling, konveyor tugas berat     | 1,2  | 1,3         | 1,4        | 1,4  | 1,5         | 1,6        |
| Penghancur, gilingan bola, pengangkat, mesin pabrik karet               | 1,3  | 1,4         | 1,5        | 1,5  | 1,6         | 1,8        |
| Mesin yang dapat dicok  | 2,0  | 2,0         | 2,0        | 2,0  | 2,0         | 2,0        |

<sup>a</sup>Sinkron, berfasa belah, tiga-fasa dengan torsi pengawalan atau torsi puncak kurang dari 175% torsi beban penuh.  
<sup>b</sup>Berfasa tunggal, tiga fasa dengan torsi pengawalan atau torsi puncak lebih besar dari 175% torsi beban penuh.

### 2. Tabel pemilihan sabuk-v (Design Manual V-Belt, Mitsuboshi)



3. Tabel faktor koreksi sudut kontak puli ( $K_1$ ) (Budynas dan Nisbett, 2011)

**Table 17-13**

Angle of Contact  
Correction Factor  $K_1$  for  
VV\* and V-Flat Drives

| $\frac{D-d}{C}$ | $\theta$ , deg | VV   | $K_1$<br>V Flat |
|-----------------|----------------|------|-----------------|
| 0.00            | 180            | 1.00 | 0.75            |
| 0.10            | 174.3          | 0.99 | 0.76            |
| 0.20            | 166.5          | 0.97 | 0.78            |
| 0.30            | 162.7          | 0.96 | 0.79            |
| 0.40            | 156.9          | 0.94 | 0.80            |
| 0.50            | 151.0          | 0.93 | 0.81            |
| 0.60            | 145.1          | 0.91 | 0.83            |
| 0.70            | 139.0          | 0.89 | 0.84            |
| 0.80            | 132.8          | 0.87 | 0.85            |
| 0.90            | 126.5          | 0.85 | 0.85            |
| 1.00            | 120.0          | 0.82 | 0.82            |
| 1.10            | 113.3          | 0.80 | 0.80            |
| 1.20            | 106.3          | 0.77 | 0.77            |
| 1.30            | 98.9           | 0.73 | 0.73            |
| 1.40            | 91.1           | 0.70 | 0.70            |
| 1.50            | 82.8           | 0.65 | 0.65            |

4. Tabel faktor koreksi panjang sabuk ( $K_2$ ) (Budynas dan Nisbett, 2011)

**Table 17-14**

Belt-Length Correction  
Factor  $K_2^*$

| Length Factor | Nominal Belt Length, in |            |            |            |           |
|---------------|-------------------------|------------|------------|------------|-----------|
|               | A Belts                 | B Belts    | C Belts    | D Belts    | E Belts   |
| 0.85          | Up to 35                | Up to 46   | Up to 75   | Up to 128  |           |
| 0.90          | 38-46                   | 48-60      | 81-96      | 144-162    | Up to 195 |
| 0.95          | 48-55                   | 62-75      | 105-120    | 173-210    | 210-240   |
| 1.00          | 60-75                   | 78-97      | 128-158    | 240        | 270-300   |
| 1.05          | 78-90                   | 105-120    | 162-195    | 270-330    | 330-390   |
| 1.10          | 96-112                  | 128-144    | 210-240    | 360-420    | 420-480   |
| 1.15          | 120 and up              | 158-180    | 270-300    | 480        | 540-600   |
| 1.20          |                         | 195 and up | 330 and up | 540 and up | 660       |

5. Tabel *horsepower rating of standar v-belt* ( $H_{tab}$ ) (Budynas dan Nisbett, 2011)

**Table 17-12**

Horsepower Ratings of Standard V Belts

| Belt Section | Sheave Pitch Diameter, in | Belt Speed, ft/min |      |      |      |      |
|--------------|---------------------------|--------------------|------|------|------|------|
|              |                           | 1000               | 2000 | 3000 | 4000 | 5000 |
| A            | 2.6                       | 0.47               | 0.62 | 0.53 | 0.15 |      |
|              | 3.0                       | 0.66               | 1.01 | 1.12 | 0.93 | 0.38 |
|              | 3.4                       | 0.81               | 1.31 | 1.57 | 1.53 | 1.12 |
|              | 3.8                       | 0.93               | 1.55 | 1.92 | 2.00 | 1.71 |
|              | 4.2                       | 1.03               | 1.74 | 2.20 | 2.38 | 2.19 |
|              | 4.6                       | 1.11               | 1.89 | 2.44 | 2.69 | 2.58 |
|              | 5.0 and up                | 1.17               | 2.03 | 2.64 | 2.96 | 2.89 |
| B            | 4.2                       | 1.07               | 1.58 | 1.68 | 1.26 | 0.22 |
|              | 4.6                       | 1.27               | 1.99 | 2.29 | 2.08 | 1.24 |
|              | 5.0                       | 1.44               | 2.33 | 2.80 | 2.76 | 2.10 |
|              | 5.4                       | 1.59               | 2.62 | 3.24 | 3.34 | 2.82 |
|              | 5.8                       | 1.72               | 2.87 | 3.61 | 3.85 | 3.45 |
|              | 6.2                       | 1.82               | 3.09 | 3.94 | 4.28 | 4.00 |
|              | 6.6                       | 1.92               | 3.29 | 4.23 | 4.67 | 4.48 |
| 7.0 and up   | 2.01                      | 3.46               | 4.49 | 5.01 | 4.90 |      |
| C            | 6.0                       | 1.84               | 2.66 | 2.72 | 1.87 |      |
|              | 7.0                       | 2.48               | 3.94 | 4.64 | 4.44 | 3.12 |
|              | 8.0                       | 2.96               | 4.90 | 6.09 | 6.36 | 5.52 |
|              | 9.0                       | 3.34               | 5.65 | 7.21 | 7.86 | 7.39 |
|              | 10.0                      | 3.64               | 6.25 | 8.11 | 9.06 | 8.89 |
|              | 11.0                      | 3.88               | 6.74 | 8.84 | 10.0 | 10.1 |
|              | 12.0 and up               | 4.09               | 7.15 | 9.46 | 10.9 | 11.1 |
| D            | 10.0                      | 4.14               | 6.13 | 6.55 | 5.09 | 1.35 |
|              | 11.0                      | 5.00               | 7.83 | 9.11 | 8.50 | 5.62 |
|              | 12.0                      | 5.71               | 9.26 | 11.2 | 11.4 | 9.18 |
|              | 13.0                      | 6.31               | 10.5 | 13.0 | 13.8 | 12.2 |
|              | 14.0                      | 6.82               | 11.5 | 14.6 | 15.8 | 14.8 |
|              | 15.0                      | 7.27               | 12.4 | 15.9 | 17.6 | 17.0 |
|              | 16.0                      | 7.66               | 13.2 | 17.1 | 19.2 | 19.0 |
| 17.0 and up  | 8.01                      | 13.9               | 18.1 | 20.6 | 20.7 |      |
| E            | 16.0                      | 8.68               | 14.0 | 17.5 | 18.1 | 15.3 |
|              | 18.0                      | 9.92               | 16.7 | 21.2 | 23.0 | 21.5 |
|              | 20.0                      | 10.9               | 18.7 | 24.2 | 26.9 | 26.4 |
|              | 22.0                      | 11.7               | 20.3 | 26.6 | 30.2 | 30.5 |
|              | 24.0                      | 12.4               | 21.6 | 28.6 | 32.9 | 33.8 |
|              | 26.0                      | 13.0               | 22.8 | 30.3 | 35.1 | 36.7 |
|              | 28.0 and up               | 13.4               | 23.7 | 31.8 | 37.1 | 39.1 |

6. Tabel baja karbon konstruksi mesin dan baja batang yang difinis dingin untuk poros (Sularso dkk, 2008)

| Standar dan macam                         | Lambang | Perlakuan panas | Kekuatan Tarik (Kg/mm <sup>2</sup> ) | Keterangan   |
|---|---------|-----------------|--------------------------------------|--|
| Baja karbon konstruksi mesin (JIS G 4501) | S30C    | Penormalan      | 48                                   |  |
|   | S35C    | Penormalan      | 52                                   |  |
|   | S40C    | Penormalan      | 55                                   |  |
|   | S45C    | Penormalan      | 58                                   |  |
|   | S50C    | Penormalan      | 62                                   |  |
|   | S55C    | Penormalan      | 66                                   |  |
| Batang baja yang difinis dingin           | S35 C-D | 2.2.6.1         | 53                                   | Ditarik dingin, digerinda, dibubut, atau gabungan. |
|   | S45 C-D | -               | 60                                   |  |
|   | S55 C-D | -               | 72                                   |  |

7. Tabel rekomendasi faktor koreksi kejutan dan fatik untuk torsi ( $K_t$ ) dan untuk momen ( $K_m$ ) (Khurmi dkk, 2005)

| Sifat Beban                             | $K_m$   | $K_t$   |
|---|---------|---------|
| 1. Poros Diam (Statis)                  |         |         |
| a. Beban bertahap                       | 1.0     | 1.0     |
| b. Beban tiba-tiba                      | 1.5-2.0 | 1.5-2.0 |
| 2. Poros Berputar (Dinamis)             |         |         |
| a. Beban bertahap atau stabil           | 1.5     | 1.0     |
| b. Beban tiba-tiba dengan kejutan kecil | 1.5-2.0 | 1.5-2.0 |
| c. Beban tiba-tiba dengan kejutan besar | 2.0-3.0 | 1.5-3.0 |

8. Tabel umur rancangan bantalan (Mott dkk, 2018)

| Application   | Design life $L_{10}$ , h |
|---|--------------------------|
| Domestic appliances, instruments, medical apparatus                         | 1000-2000                |
| Aircraft engines  | 1000-4000                |
| Automotive  | 1500-5000                |
| Agricultural equipment, hoists, construction machines                       | 3000-6000                |
| Elevators, industrial fans, multipurpose gearing, rotary crushers, cranes   | 8000-15 000              |
| Electric motors, industrial blowers, general industrial machines, conveyors | 20 000-30 000            |
| Pumps and compressors, textile machinery, rolling mill drives               | 40 000-60 000            |
| Critical equipment in continuous, 24-h operation; power plants, ship drives | 100 000-200 000          |

Source: Eugene A. Avallone and Theodore Baumeister III, eds., *Marks' Standard Handbook for Mechanical Engineers*, 9th ed. New York: McGraw-Hill, 1986.

9. Tabel nomor bantalan (Mott dkk, 2018)

| Bearing number | Nominal bearing dimensions |        |                   |        |            |        | Basic load ratings |                 |              |                 | Maximum fillet radius $r_{max}^1$ |       | Minimum shaft shoulder diameter, $S$ |       | Maximum housing shoulder diameter, $H$ |       | Bearing mass |                 |
|----------------|----------------------------|--------|-------------------|--------|------------|--------|--------------------|-----------------|--------------|-----------------|-----------------------------------|-------|--------------------------------------|-------|--|-------|--------------|-----------------|
|                | Bore, $d$                  |        | Outside dia., $D$ |        | Width, $B$ |        | Static, $C_0$      |                 | Dynamic, $C$ |                 | mm                                | in    | mm                                   | in    | mm                                     | in    | kg           | lb <sub>m</sub> |
|                | mm                         | in     | mm                | in     | mm         | in     | kN                 | lb <sub>f</sub> | kN           | lb <sub>f</sub> | mm                                | in    | mm                                   | in    | mm                                     | in    | kg           | lb <sub>m</sub> |
| 6000           | 10                         | 0.3937 | 26                | 1.0236 | 8          | 0.3150 | 1.96               | 441             | 4.62         | 1039            | 0.3                               | 0.012 | 12                                   | 0.472 | 24                                     | 0.945 | 0.019        | 0.042           |
| 6200           | 10                         | 0.3937 | 30                | 1.1811 | 9          | 0.3543 | 2.36               | 531             | 5.07         | 1140            | 0.6                               | 0.024 | 14                                   | 0.551 | 26                                     | 1.024 | 0.032        | 0.071           |
| 6300           | 10                         | 0.3937 | 35                | 1.3780 | 11         | 0.4331 | 8.06               | 1812            | 3.40         | 764             | 0.6                               | 0.024 | 14                                   | 0.551 | 31                                     | 1.220 | 0.053        | 0.117           |
| 6001           | 12                         | 0.4724 | 28                | 1.1024 | 8          | 0.3150 | 2.36               | 531             | 5.07         | 1140            | 0.3                               | 0.012 | 14                                   | 0.551 | 26                                     | 1.024 | 0.022        | 0.049           |
| 6201           | 12                         | 0.4724 | 32                | 1.2598 | 10         | 0.3937 | 3.10               | 697             | 6.89         | 1549            | 0.6                               | 0.024 | 16                                   | 0.630 | 28                                     | 1.102 | 0.037        | 0.082           |
| 6301           | 12                         | 0.4724 | 37                | 1.4567 | 12         | 0.4724 | 4.15               | 933             | 9.75         | 2192            | 1.0                               | 0.039 | 17                                   | 0.669 | 32                                     | 1.260 | 0.060        | 0.132           |
| 6002           | 15                         | 0.5906 | 32                | 1.2598 | 9          | 0.3543 | 2.85               | 641             | 5.59         | 1257            | 0.3                               | 0.012 | 17                                   | 0.669 | 30                                     | 1.181 | 0.030        | 0.066           |
| 6202           | 15                         | 0.5906 | 36                | 1.3780 | 11         | 0.4331 | 3.75               | 843             | 7.80         | 1754            | 0.6                               | 0.024 | 19                                   | 0.748 | 31                                     | 1.220 | 0.045        | 0.099           |
| 6302           | 15                         | 0.5906 | 42                | 1.6535 | 13         | 0.5118 | 5.40               | 1214            | 11.40        | 2563            | 1.0                               | 0.039 | 20                                   | 0.787 | 37                                     | 1.457 | 0.082        | 0.181           |
| 6003           | 17                         | 0.6693 | 35                | 1.3780 | 10         | 0.3937 | 3.25               | 731             | 6.05         | 1360            | 0.3                               | 0.012 | 19                                   | 0.748 | 33                                     | 1.299 | 0.039        | 0.086           |
| 6203           | 17                         | 0.6693 | 40                | 1.5748 | 12         | 0.4724 | 4.75               | 1068            | 9.56         | 2149            | 0.6                               | 0.024 | 21                                   | 0.827 | 36                                     | 1.417 | 0.065        | 0.143           |
| 6303           | 17                         | 0.6693 | 47                | 1.8504 | 14         | 0.5512 | 6.55               | 1473            | 13.50        | 3035            | 1.0                               | 0.039 | 22                                   | 0.866 | 42                                     | 1.654 | 0.120        | 0.265           |
| 6004           | 20                         | 0.7874 | 42                | 1.6535 | 12         | 0.4724 | 5.00               | 1124            | 9.36         | 2104            | 0.6                               | 0.024 | 24                                   | 0.945 | 38                                     | 1.496 | 0.069        | 0.152           |
| 6204           | 20                         | 0.7874 | 47                | 1.8504 | 14         | 0.5512 | 6.55               | 1473            | 12.70        | 2855            | 1.0                               | 0.039 | 25                                   | 0.984 | 42                                     | 1.654 | 0.110        | 0.243           |
| 6304           | 20                         | 0.7874 | 52                | 2.0472 | 15         | 0.5906 | 7.80               | 1754            | 15.90        | 3575            | 1.0                               | 0.039 | 27                                   | 1.063 | 45                                     | 1.772 | 0.140        | 0.309           |

## LAMPIRAN 2

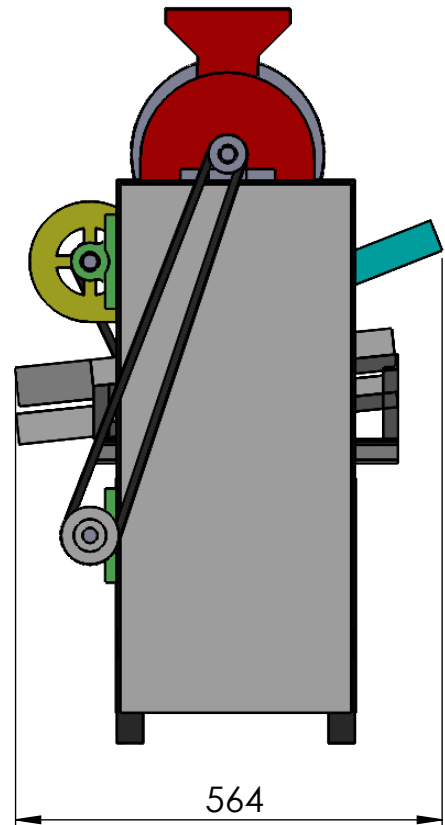
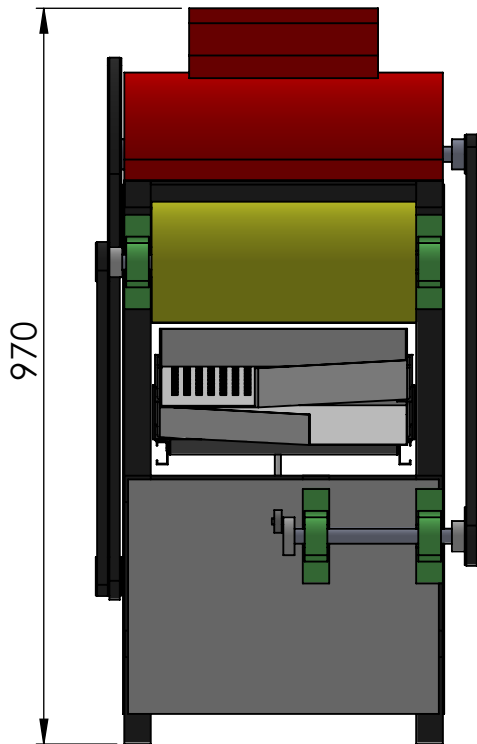
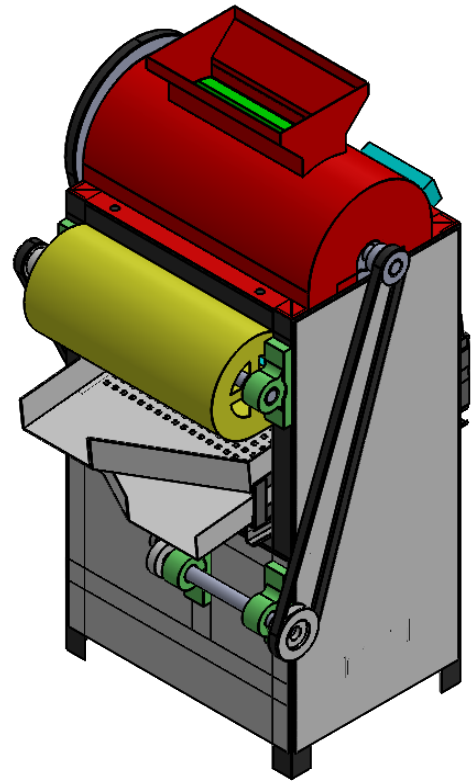
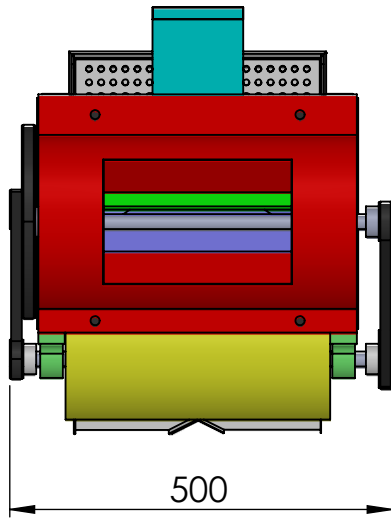
### 1. Tabel data material dan *cutting speed*

| Material                       | Teg. Tarik (kg/mm <sup>2</sup> ) | CS (m/mnt) | Material                        | Teg. Tarik (kg/mm <sup>2</sup> ) | CS (m/mnt) |
|--------------------------------|----------------------------------|------------|---------------------------------|----------------------------------|------------|
| <b>Plain carbon steel</b>      |                                  |            | <b>Spring Steel (JIS Grade)</b> |                                  |            |
| ST37 / M5                      | 37                               | 32         | SUP4, 6, 7, 9, 10, 11           | 125                              | 13         |
| 1080 / S30C                    | 48                               | 32         | SUS 302, 304, 316 WPA           | 170                              | 5          |
| 1085 / S35C                    | 52                               | 25         | SUS 302, 304, WPB               | 210                              | 5          |
| 1040 / S40C                    | 55                               | 25         | SUS 631J1 WPC                   | 200                              | 5          |
| 1045 / S45C / EMS45 / 1730     | 58                               | 25         | <b>Stainless Steel</b>          |                                  | 10-25      |
| 1050 / S50C / ST60             | 62                               | 25         | 304, 304L, 316, 316L            | 70                               | 18         |
| 1055 / S55C                    | 66                               | 25         | 410, 416                        | 77                               | 18         |
| <b>Alloy Steel (JIS Grade)</b> |                                  |            | 420, 420F                       | 84                               | 18         |
| SNC2, 3, 21                    | 95                               | 18         | 440C, 440F                      | 91                               | 18         |
| SNC22                          | 100                              | 13         | <b>Copper</b>                   |                                  | 70         |
| SNCM1, 2, 22                   | 90                               | 18         | <b>Lead Bronze</b>              |                                  | 50-70      |
| SNCM7, 8, 23, 25               | 100                              | 13         | <b>Phosphor Bronze</b>          |                                  | 40-50      |
| SCr3, 4, 21, 22                | 90                               | 18         | <b>Pure Aluminum</b>            |                                  | 200-300    |
| SCr5                           | 100                              | 13         | <b>Aluminum Alloy</b>           |                                  | 70-120     |
| SCM2, 3, 21, 22                | 90                               | 18         | <b>Cast Iron</b>                |                                  |            |
| SCM4, 5, 23                    | 100                              | 13         | GG20                            |                                  | 25         |
| <b>Tool Steel (AISI Grade)</b> |                                  |            | GG25                            |                                  | 18         |
| W Series                       | 70                               | 18         | GG30, 35, 40                    |                                  | 18         |
| O Series                       | 135                              | 13         | GG45, 50                        |                                  | 13         |
| D Series                       | 140                              | 13         | GG55, 60                        |                                  | 5          |
| A Series                       | 140                              | 13         |                                 |                                  |            |
| H Series                       | 140                              | 13         |                                 |                                  |            |
| L Series                       | 100                              | 13         |                                 |                                  |            |
| P Series                       | 100                              | 13         |                                 |                                  |            |
| S Series                       | 130                              | 13         |                                 |                                  |            |
| HSS T Series                   | 150                              | 13         |                                 |                                  |            |
| HSS M Series                   | 140                              | 13         |                                 |                                  |            |

### 2. Tabel kecepatan spindel mesin bubut

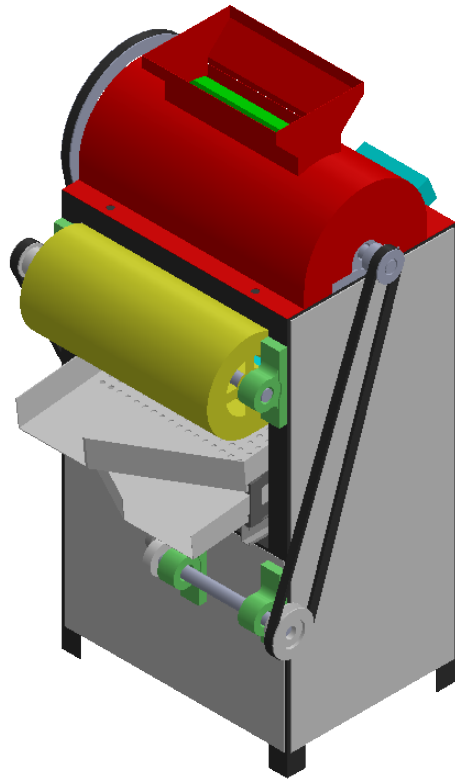
|   | 1   | 2   | 3    |
|---|-----|-----|------|
| A | 60  | 220 | 860  |
| B | 92  | 360 | 1400 |
| C | 140 | 530 | 2000 |

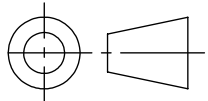




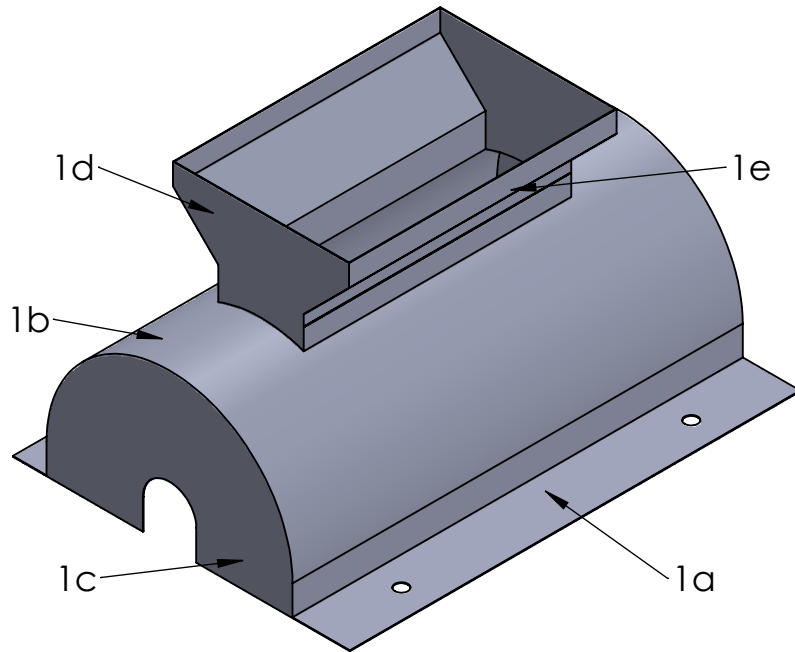
| JML  | NAMA BAGIAN |      |      |      |      | POS  | BAHAN            | UKURAN JADI     | UKURAN KASAR | NO ID | F        |
|--|-------------|------|------|------|------|------|------------------|-----------------|--------------|-------|----------|
| >  | 0           | 6    | 30   | 120  | 400  | 1000 | PEKERJAAN LANJUT | NO ORDER        |              |       |          |
| <  | 6           | 30   | 120  | 400  | 1000 | 2000 |                  |                 |              |       |          |
| TOL  | +0,1        | +0,2 | +0,3 | +0,5 | +0,8 | +1,2 |                  |                 |              |       |          |
| MESIN PENGUPAS DAN PEMILAH KACANG TANAH        |             |      |      |      |      |      |                  | SKALA<br>1 : 10 | DIGAMBAR     | FEBRI | 10-04-23 |
|  |             |      |      |      |      |      |                  |                 | DIPERIKSA    |       |          |
|  |             |      |      |      |      |      |                  |                 | DISAHKAN     |       |          |
| POLITEKNIK NEGERI CILACAP JURUSAN TEKNIK MESIN |             |      |      |      |      |      |                  | FORMAT<br>A4    |              |       |          |





| JML                                     | NAMA BAGIAN |      |      |      |      | POS  | BAHAN            | UKURAN JADI                                    | UKURAN KASAR  | NO ID | F        |
|---|-------------|------|------|------|------|------|------------------|--|---|-------|----------|
| >                                       | 0           | 6    | 30   | 120  | 400  | 1000 | PEKERJAAN LANJUT | NO ORDER                                       |  |       |          |
| <                                       | 6           | 30   | 120  | 400  | 1000 | 2000 |                  |  |   |       |          |
| TOL                                     | +0,1        | +0,2 | +0,3 | +0,5 | +0,8 | +1,2 |                  |  |   |       |          |
| MESIN PENGUPAS DAN PEMILAH KACANG TANAH |             |      |      |      |      |      |                  | SKALA  | DIGAMBAR  | FEBRI | 10-04-23 |
|   |             |      |      |      |      |      |                  | 1 : 10   | DIPERIKSA   |       |          |
|   |             |      |      |      |      |      |                  |  | DISAHKAN  |       |          |
|   |             |      |      |      |      |      |                  | POLITEKNIK NEGERI CILACAP JURUSAN TEKNIK MESIN |   |       |          |

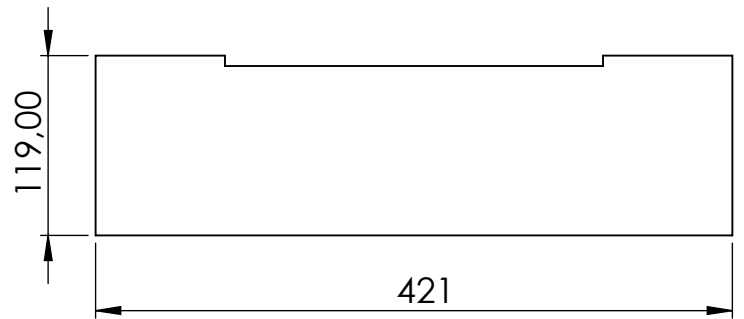
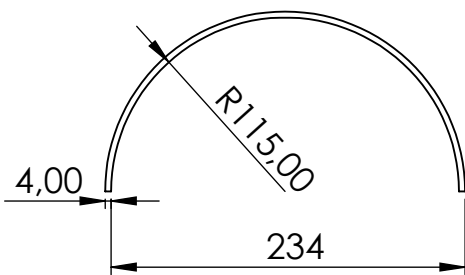
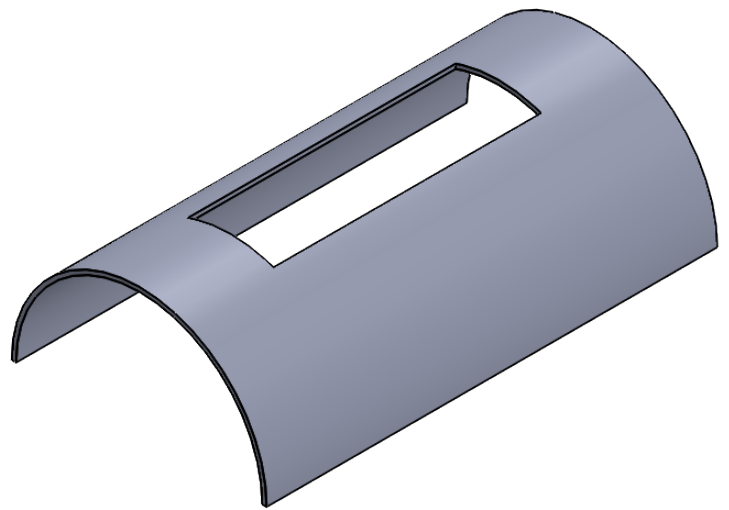
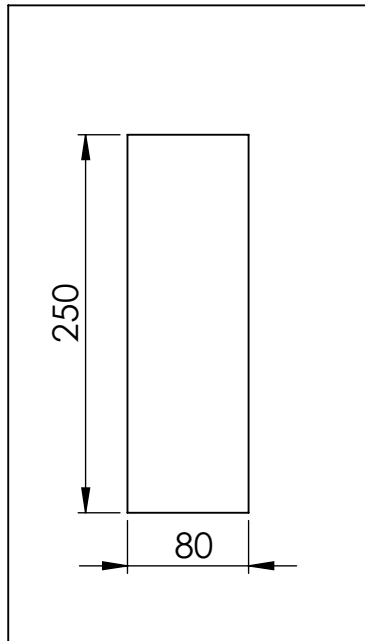




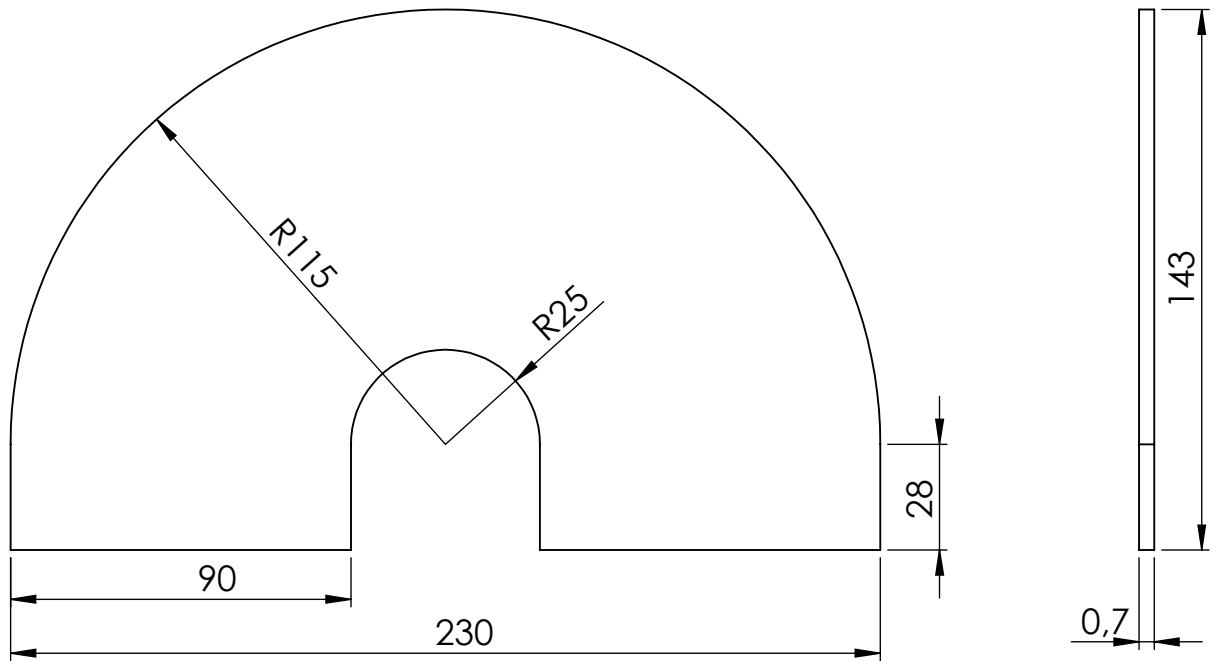
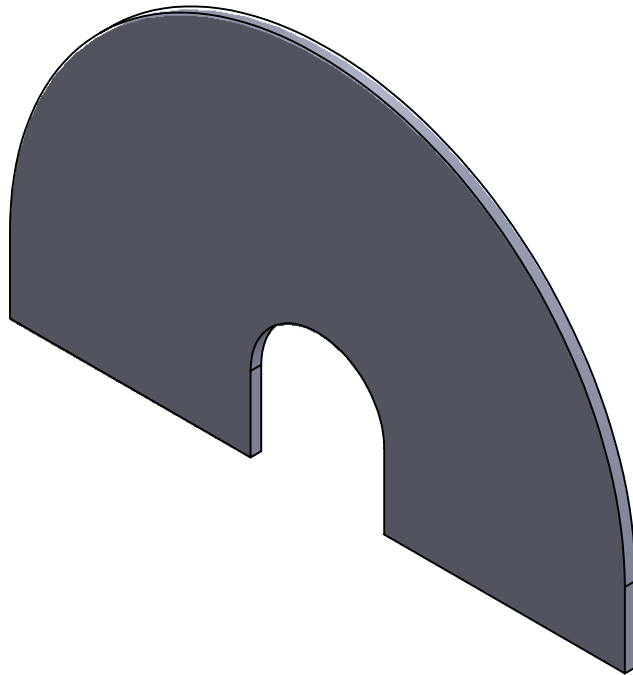
|     |                         |      |       |              |              |       |                  |
|-----|-------------------------|------|-------|--------------|--------------|-------|------------------|
| 2   | PLAT HOPER BAG. SAMPING | -    | ST 37 | LIHAT DETAIL | -            | 1E    | -                |
| 2   | PLAT HOPER BAG. DEPAN   | -    | ST 37 | LIHAT DETAIL | -            | 1D    | -                |
| 2   | PLAT COVER BAG. DEPAN   | -    | ST 37 | LIHAT DETAIL | -            | 1C    | -                |
| 1   | PLAT LINGKUNG COVER     | -    | ST 37 | LIHAT DETAIL | -            | 1B    | -                |
| 2   | PLAT SIKU COVER         | -    | ST 37 | LIHAT DETAIL | -            | 1A    | -                |
| JML | Nama Bagian             | POS  | BAHAN | UKURAN JADI  | UKURAN KASAR | NO ID | F                |
| >   | 0                       | 6    | 30    | 120          | 400          | 1000  | PEKERJAAN LANJUT |
| <   | 6                       | 30   | 120   | 400          | 1000         | 2000  |                  |
| TOL | +0,1                    | +0,2 | +0,3  | +0,5         | +0,8         | +1,2  |                  |
|     |                         |      |       |              | NO ORDER     |       |                  |

### COVER DAN HOPER

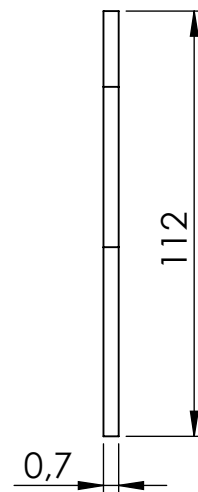
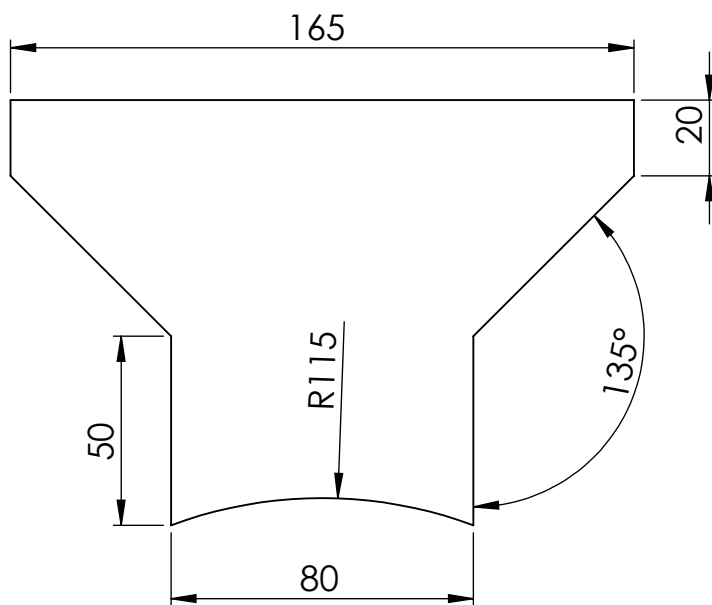
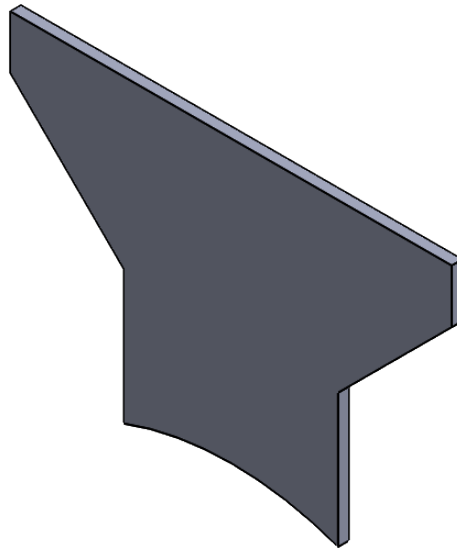
|                |           |       |          |
|----------------|-----------|-------|----------|
| SKALA<br>1 : 5 | DIGAMBAR  | FEBRI | 10-04-23 |
|                | DIPERIKSA |       |          |
|                | DISAHKAN  |       |          |
|                |           |       |          |
| FORMAT<br>A4   |           |       |          |



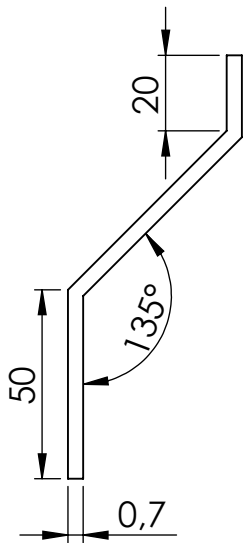
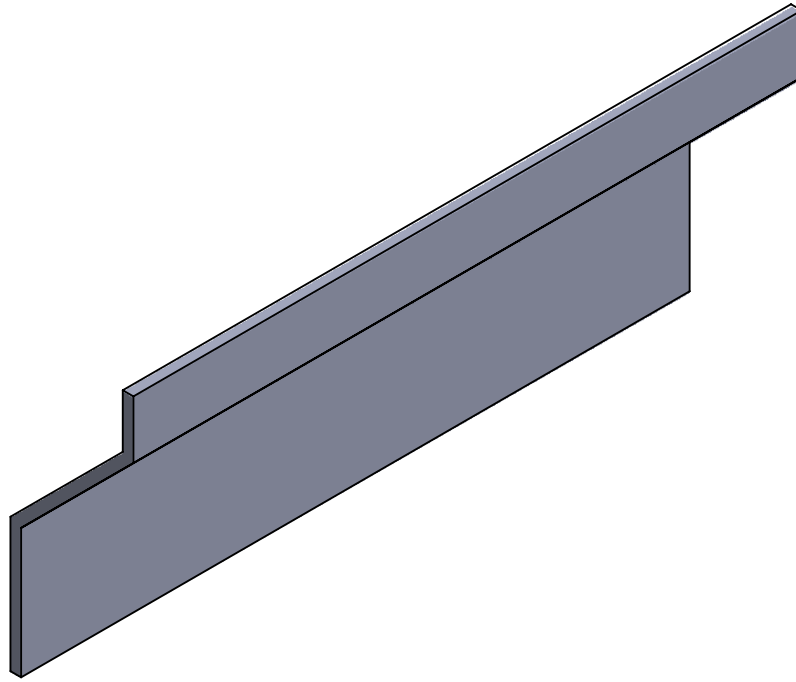
|  |                     |      |      |      |      |      |                  |       |              |              |       |          |
|--|---------------------|------|------|------|------|------|------------------|-------|--------------|--------------|-------|----------|
| 1  | PLAT LENGKUNG COVER |      |      |      |      |      | -                | ST 37 | LIHAT DETAIL | -            | 1B    | -        |
| JML  | NAMA BAGIAN         |      |      |      |      |      | POS              | BAHAN | UKURAN JADI  | UKURAN KASAR | NO ID | F        |
| >  | 0                   | 6    | 30   | 120  | 400  | 1000 | PEKERJAAN LANJUT |       | NO ORDER     |              |       |          |
| <  | 6                   | 30   | 120  | 400  | 1000 | 2000 |                  |       |              |              |       |          |
| TOL  | +0,1                | +0,2 | +0,3 | +0,5 | +0,8 | +1,2 |                  |       |              |              |       |          |
| <b>PLAT LENGKUNG COVER</b>   |                     |      |      |      |      |      |                  |       | SKALA        | DIGAMBAR     | FEBRI | 10-04-23 |
|  |                     |      |      |      |      |      |                  |       | 1 : 5        | DIPERIKSA    |       |          |
|  |                     |      |      |      |      |      |                  |       |              | DISAHKAN     |       |          |
| POLITEKNIK NEGERI CILACAP<br>JURUSAN REKAYASA MESIN DAN INDUSTRI PERTANIAN |                     |      |      |      |      |      |                  |       | FORMAT<br>A4 |              |       |          |



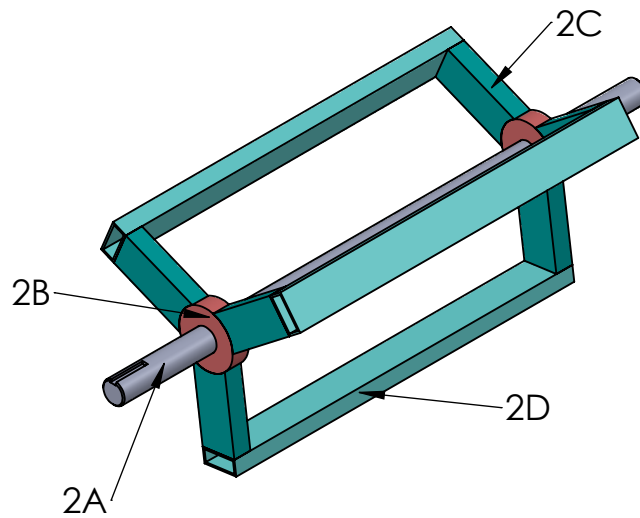
|  |                       |      |      |      |      |      |                  |       |              |              |       |          |
|--|-----------------------|------|------|------|------|------|------------------|-------|--------------|--------------|-------|----------|
| 2  | PLAT COVER BAG. DEPAN |      |      |      |      |      | -                | ST 37 | LIHAT DETAIL | -            | 1C    | -        |
| JML  | NAMA BAGIAN           |      |      |      |      |      | POS              | BAHAN | UKURAN JADI  | UKURAN KASAR | NO ID | F        |
| >  | 0                     | 6    | 30   | 120  | 400  | 1000 | PEKERJAAN LANJUT |       | NO ORDER     |              |       |          |
| <  | 6                     | 30   | 120  | 400  | 1000 | 2000 |                  |       |              |              |       |          |
| TOL  | +0,1                  | +0,2 | +0,3 | +0,5 | +0,8 | +1,2 |                  |       |              |              |       |          |
| <b>PLAT COVER BAGIAN DEPAN</b>   |                       |      |      |      |      |      |                  |       | SKALA        | DIGAMBAR     | FEBRI | 10-04-23 |
|  |                       |      |      |      |      |      |                  |       | 1 : 2        | DIPERIKSA    |       |          |
|  |                       |      |      |      |      |      |                  |       |              | DISAHKAN     |       |          |
| POLITEKNIK NEGERI CILACAP<br>JURUSAN REKAYASA MESIN DAN INDUSTRI PERTANIAN |                       |      |      |      |      |      |                  |       | FORMAT<br>A4 |              |       |          |



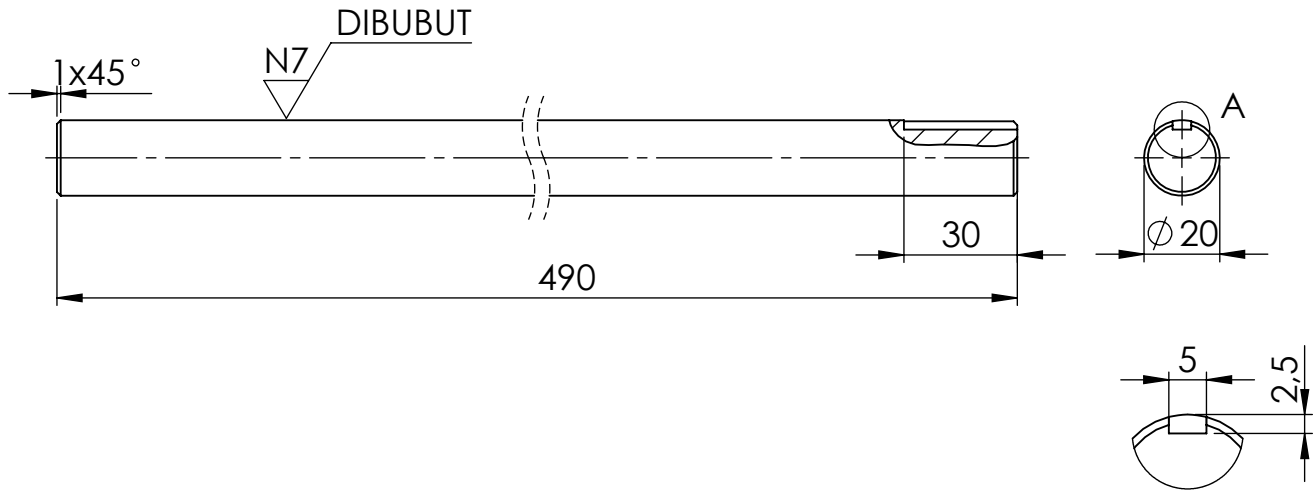
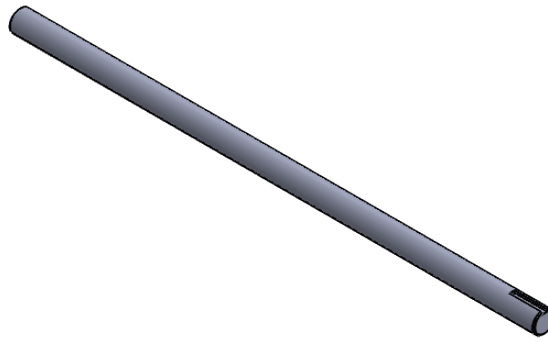
|  |                       |      |      |      |      |      |                  |       |              |              |       |          |
|--|-----------------------|------|------|------|------|------|------------------|-------|--------------|--------------|-------|----------|
| 2  | PLAT HOPER BAG. DEPAN |      |      |      |      |      | -                | ST 37 | LIHAT DETAIL | -            | 1D    | -        |
| JML  | NAMA BAGIAN           |      |      |      |      |      | POS              | BAHAN | UKURAN JADI  | UKURAN KASAR | NO ID | F        |
| >  | 0                     | 6    | 30   | 120  | 400  | 1000 | PEKERJAAN LANJUT |       | NO ORDER     |              |       |          |
| <  | 6                     | 30   | 120  | 400  | 1000 | 2000 |                  |       |              |              |       |          |
| TOL  | +0,1                  | +0,2 | +0,3 | +0,5 | +0,8 | +1,2 |                  |       |              |              |       |          |
| <b>PLAT HOPER BAGIAN DEPAN</b>   |                       |      |      |      |      |      |                  |       | SKALA        | DIGAMBAR     | FEBRI | 10-04-23 |
|  |                       |      |      |      |      |      |                  |       | 1 : 2        | DIPERIKSA    |       |          |
|  |                       |      |      |      |      |      |                  |       |              | DISAHKAN     |       |          |
| POLITEKNIK NEGERI CILACAP<br>JURUSAN REKAYASA MESIN DAN INDUSTRI PERTANIAN |                       |      |      |      |      |      |                  |       | FORMAT<br>A4 |              |       |          |



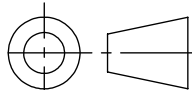
|  |                         |      |      |      |      |      |                  |       |              |              |       |          |
|--|-------------------------|------|------|------|------|------|------------------|-------|--------------|--------------|-------|----------|
| 2  | PLAT HOPER BAG. SAMPING |      |      |      |      |      | -                | ST 37 | LIHAT DETAIL | -            | 1E    | -        |
| JML  | NAMA BAGIAN             |      |      |      |      |      | POS              | BAHAN | UKURAN JADI  | UKURAN KASAR | NO ID | F        |
| >  | 0                       | 6    | 30   | 120  | 400  | 1000 | PEKERJAAN LANJUT |       | NO ORDER     |              |       |          |
| <  | 6                       | 30   | 120  | 400  | 1000 | 2000 |                  |       |              |              |       |          |
| TOL  | +0,1                    | +0,2 | +0,3 | +0,5 | +0,8 | +1,2 |                  |       |              |              |       |          |
| <b>PLAT HOPER BAGIAN SAMPING</b>   |                         |      |      |      |      |      |                  |       | SKALA        | DIGAMBAR     | FEBRI | 10-04-23 |
|  |                         |      |      |      |      |      |                  |       | 1 : 2        | DIPERIKSA    |       |          |
|  |                         |      |      |      |      |      |                  |       |              | DISAHKAN     |       |          |
|  |                         |      |      |      |      |      |                  |       |              |              |       |          |
| POLITEKNIK NEGERI CILACAP<br>JURUSAN REKAYASA MESIN DAN INDUSTRI PERTANIAN |                         |      |      |      |      |      |                  |       | FORMAT<br>A4 |              |       |          |



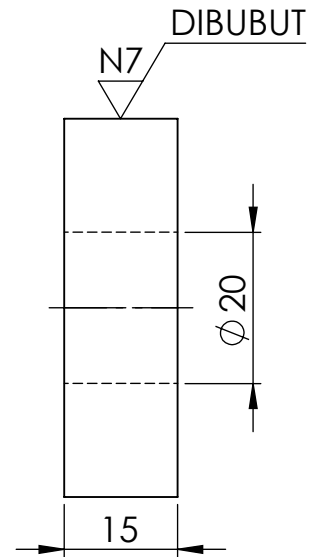
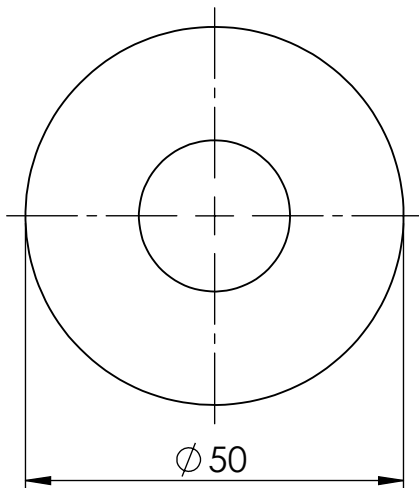
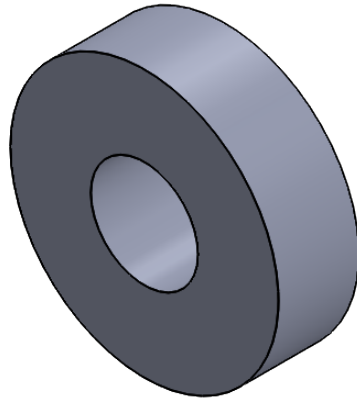
|  |                  |      |      |      |      |      |                  |       |              |              |       |          |
|--|------------------|------|------|------|------|------|------------------|-------|--------------|--------------|-------|----------|
| 3  | MATA PENGUPAS    |      |      |      |      |      | -                | ST 37 | LIHAT DETAIL | -            | 2D    | -        |
| 6  | KAKI PENGUPAS    |      |      |      |      |      | -                | ST 37 | LIHAT DETAIL | -            | 2C    | -        |
| 2  | BUSHING PENGUPAS |      |      |      |      |      | -                | ST 37 | LIHAT DETAIL | -            | 2B    | -        |
| 1  | POROS PENGUPAS   |      |      |      |      |      | -                | S45C  | LIHAT DETAIL | -            | 2A    | -        |
| JML  | Nama Bagian      |      |      |      |      |      | POS              | BAHAN | UKURAN JADI  | UKURAN KASAR | NO ID | F        |
| >  | 0                | 6    | 30   | 120  | 400  | 1000 | PEKERJAAN LANJUT |       | NO ORDER     |              |       |          |
| <  | 6                | 30   | 120  | 400  | 1000 | 2000 |                  |       |              |              |       |          |
| TOL  | +0,1             | +0,2 | +0,3 | +0,5 | +0,8 | +1,2 |                  |       |              |              |       |          |
| <b>PENGUPAS</b>  |                  |      |      |      |      |      |                  |       | SKALA        | DIGAMBAR     | FEBRI | 10-04-23 |
|  |                  |      |      |      |      |      |                  |       | 1 : 5        | DIPERIKSA    |       |          |
|  |                  |      |      |      |      |      |                  |       |              | DISAHKAN     |       |          |
|  |                  |      |      |      |      |      |                  |       |              |              |       |          |
| POLITEKNIK NEGERI CILACAP<br>JURUSAN REKAYASA MESIN DAN INDUSTRI PERTANIAN |                  |      |      |      |      |      |                  |       | FORMAT<br>A4 |              |       |          |



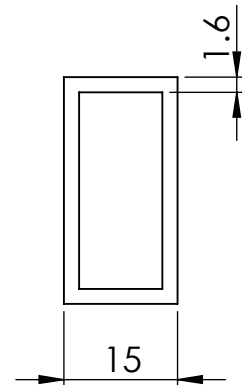
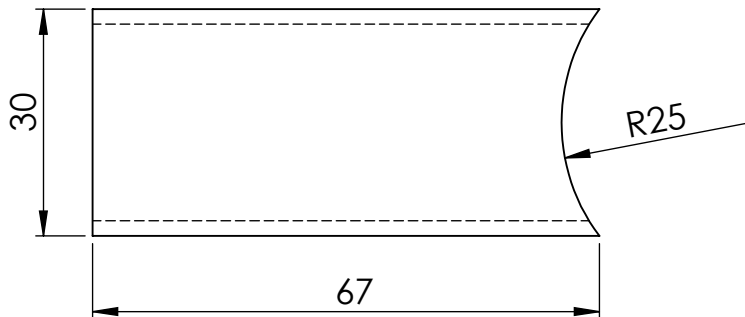
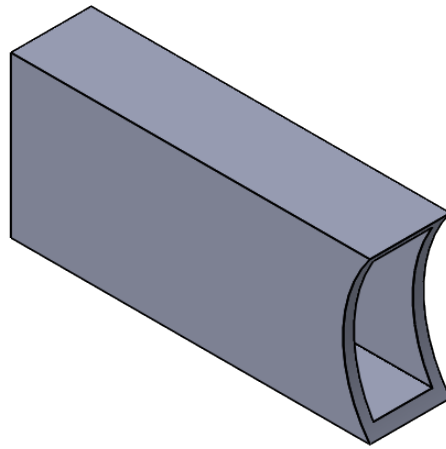
DETAIL A  
SKALA 1 : 1

|  |                |      |      |      |      |      |                  |       |              |   |       |          |
|--|----------------|------|------|------|------|------|------------------|-------|--------------|---|-------|----------|
| 1  | POROS PENGUPAS |      |      |      |      |      | -                | S45C  | LIHAT DETAIL | -   | 2A    | -        |
| JML  | NAMA BAGIAN    |      |      |      |      |      | POS              | BAHAN | UKURAN JADI  | UKURAN KASAR  | NO ID | F        |
| >  | 0              | 6    | 30   | 120  | 400  | 1000 | PEKERJAAN LANJUT |       | NO ORDER     |  |       |          |
| <  | 6              | 30   | 120  | 400  | 1000 | 2000 |                  |       |              |   |       |          |
| TOL  | +0,1           | +0,2 | +0,3 | +0,5 | +0,8 | +1,2 |                  |       |              |   |       |          |
| POROS PENGUPAS   |                |      |      |      |      |      |                  |       | SKALA        | DIGAMBAR  | FEBRI | 10-04-23 |
|  |                |      |      |      |      |      |                  |       | 1 : 2        | DIPERIKSA   |       |          |
|  |                |      |      |      |      |      |                  |       |              | DISAHKAN  |       |          |
| POLITEKNIK NEGERI CILACAP<br>JURUSAN REKAYASA MESIN DAN INDUSTRI PERTANIAN |                |      |      |      |      |      |                  |       | FORMAT<br>A4 |   |       |          |

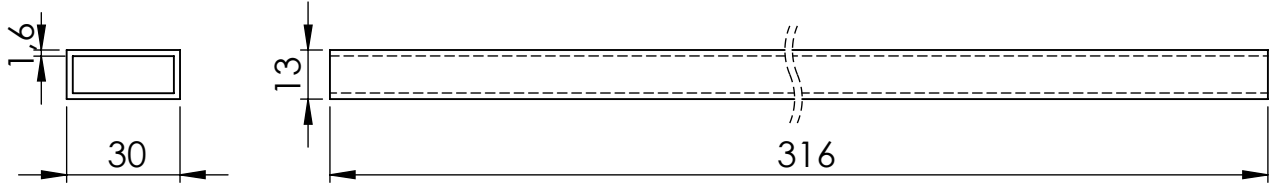
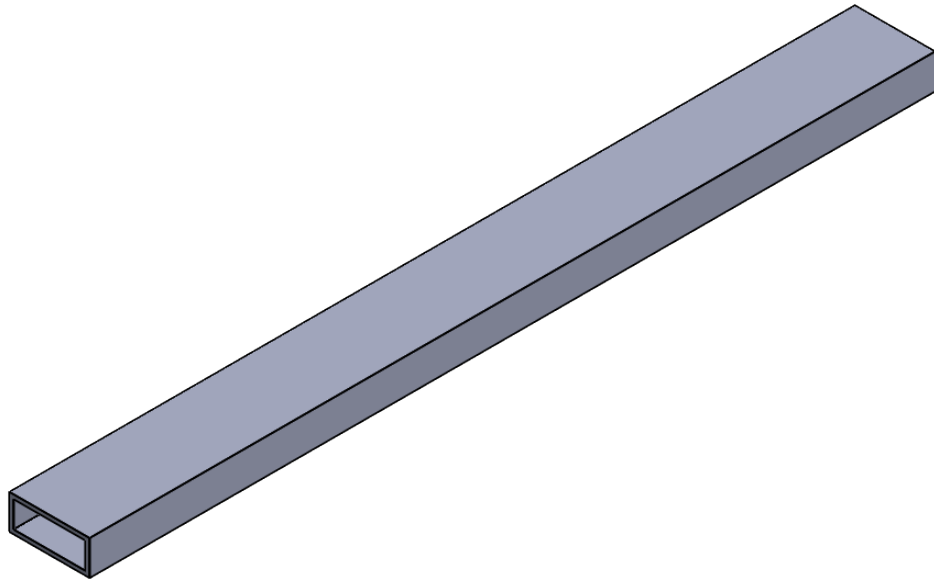




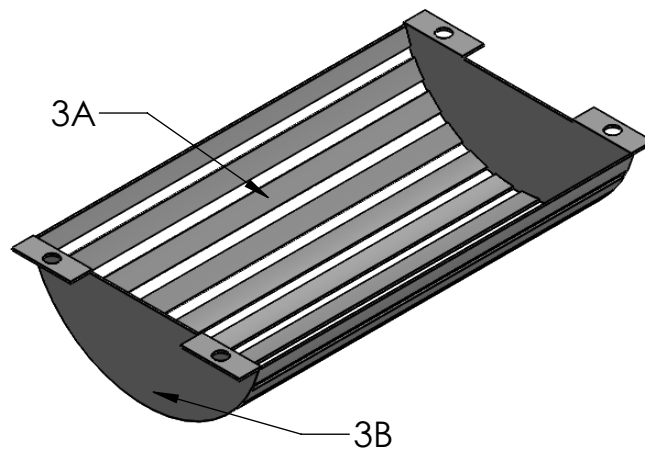
|  |                  |      |      |      |      |      |                  |       |              |              |       |          |
|--|------------------|------|------|------|------|------|------------------|-------|--------------|--------------|-------|----------|
| 2  | BUSHING PENGUPAS |      |      |      |      |      | -                | ST 37 | LIHAT DETAIL | -            | 2B    | -        |
| JML  | NAMA BAGIAN      |      |      |      |      |      | POS              | BAHAN | UKURAN JADI  | UKURAN KASAR | NO ID | F        |
| >  | 0                | 6    | 30   | 120  | 400  | 1000 | PEKERJAAN LANJUT |       | NO ORDER     |              |       |          |
| <  | 6                | 30   | 120  | 400  | 1000 | 2000 |                  |       |              |              |       |          |
| TOL  | +0,1             | +0,2 | +0,3 | +0,5 | +0,8 | +1,2 |                  |       |              |              |       |          |
| <b>BUSHING PENGUPAS</b>  |                  |      |      |      |      |      |                  |       | SKALA        | DIGAMBAR     | FEBRI | 10-04-23 |
|  |                  |      |      |      |      |      |                  |       | 1 : 1        | DIPERIKSA    |       |          |
|  |                  |      |      |      |      |      |                  |       |              | DISAHKAN     |       |          |
| POLITEKNIK NEGERI CILACAP<br>JURUSAN REKAYASA MESIN DAN INDUSTRI PERTANIAN |                  |      |      |      |      |      |                  |       | FORMAT<br>A4 |              |       |          |



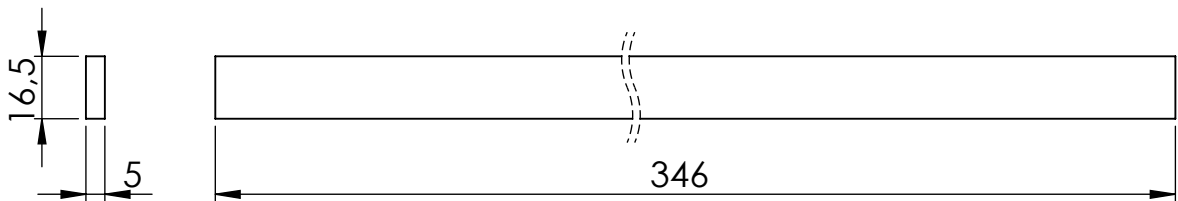
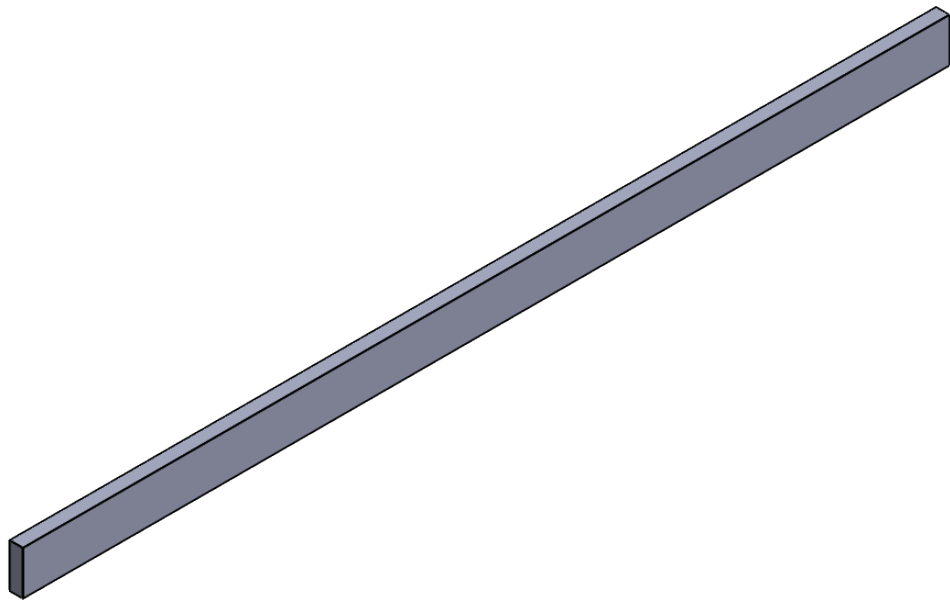
|  |               |      |      |      |      |      |                  |       |              |              |       |          |
|--|---------------|------|------|------|------|------|------------------|-------|--------------|--------------|-------|----------|
| 6  | KAKI PENGUPAS |      |      |      |      |      | -                | ST 37 | LIHAT DETAIL | -            | 2C    | -        |
| JML  | NAMA BAGIAN   |      |      |      |      |      | POS              | BAHAN | UKURAN JADI  | UKURAN KASAR | NO ID | F        |
| >  | 0             | 6    | 30   | 120  | 400  | 1000 | PEKERJAAN LANJUT |       | NO ORDER     |              |       |          |
| <  | 6             | 30   | 120  | 400  | 1000 | 2000 |                  |       |              |              |       |          |
| TOL  | +0,1          | +0,2 | +0,3 | +0,5 | +0,8 | +1,2 |                  |       |              |              |       |          |
| <b>KAKI PENGUPAS</b>   |               |      |      |      |      |      |                  |       | SKALA        | DIGAMBAR     | FEBRI | 10-04-23 |
|  |               |      |      |      |      |      |                  |       | 1 : 1        | DIPERIKSA    |       |          |
|  |               |      |      |      |      |      |                  |       |              | DISAHKAN     |       |          |
| POLITEKNIK NEGERI CILACAP<br>JURUSAN REKAYASA MESIN DAN INDUSTRI PERTANIAN |               |      |      |      |      |      |                  |       | FORMAT<br>A4 |              |       |          |



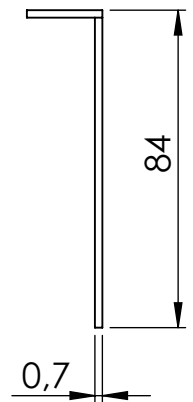
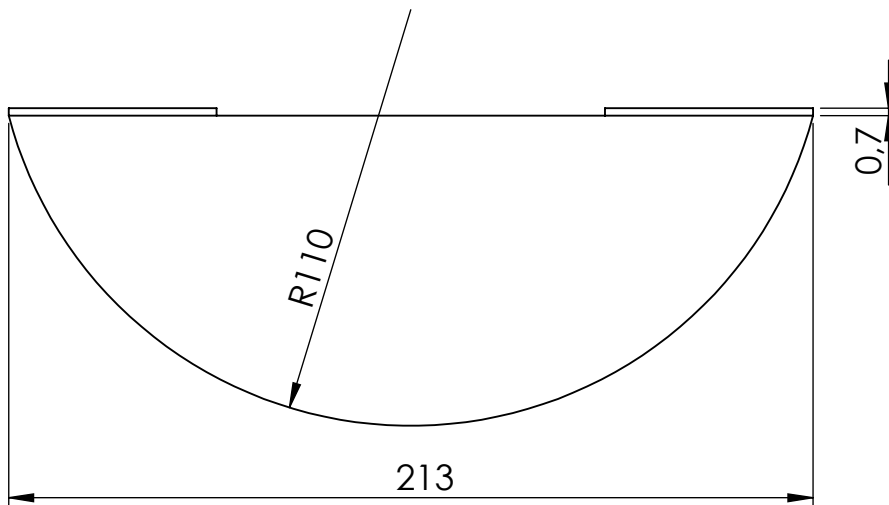
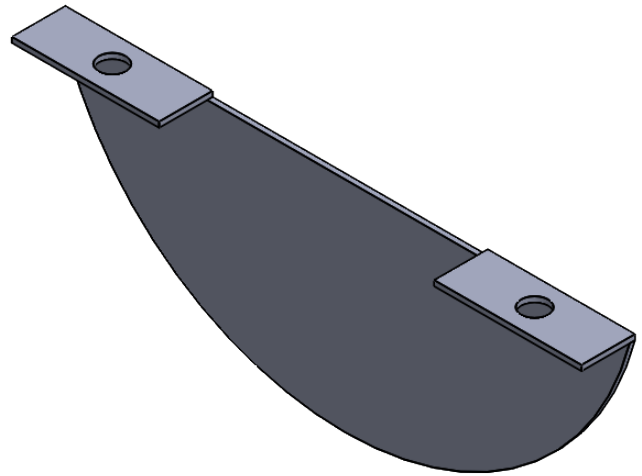
|  |               |      |      |      |      |      |                  |       |              |              |       |          |
|--|---------------|------|------|------|------|------|------------------|-------|--------------|--------------|-------|----------|
| 3  | MATA PENGUPAS |      |      |      |      |      | -                | ST 37 | LIHAT DETAIL | -            | 2D    | -        |
| JML  | NAMA BAGIAN   |      |      |      |      |      | POS              | BAHAN | UKURAN JADI  | UKURAN KASAR | NO ID | F        |
| >  | 0             | 6    | 30   | 120  | 400  | 1000 | PEKERJAAN LANJUT |       | NO ORDER     |              |       |          |
| <  | 6             | 30   | 120  | 400  | 1000 | 2000 |                  |       |              |              |       |          |
| TOL  | +0,1          | +0,2 | +0,3 | +0,5 | +0,8 | +1,2 |                  |       |              |              |       |          |
| <b>MATA PENGUPAS</b>   |               |      |      |      |      |      |                  |       | SKALA        | DIGAMBAR     | FEBRI | 10-04-23 |
|  |               |      |      |      |      |      |                  |       | 1 : 2        | DIPERIKSA    |       |          |
|  |               |      |      |      |      |      |                  |       |              | DISAHKAN     |       |          |
| POLITEKNIK NEGERI CILACAP<br>JURUSAN REKAYASA MESIN DAN INDUSTRI PERTANIAN |               |      |      |      |      |      |                  |       | FORMAT<br>A4 |              |       |          |



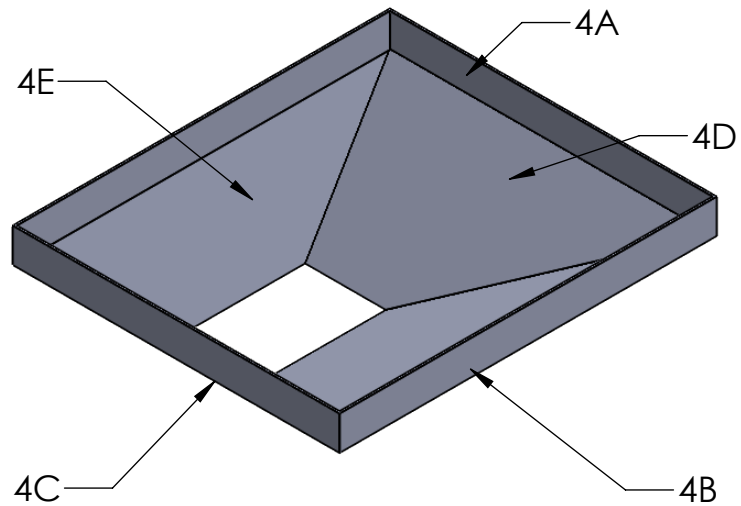
|  |                       |      |      |      |      |      |                  |       |              |              |       |          |
|--|-----------------------|------|------|------|------|------|------------------|-------|--------------|--------------|-------|----------|
| 2  | PLAT LANDASAN SAMPING |      |      |      |      |      | -                | ST 37 | LIHAT DETAIL | -            | 3B    | -        |
| 10   | PLAT LANDASAN UTAMA   |      |      |      |      |      | -                | ST 37 | LIHAT DETAIL | -            | 3A    | -        |
| JML  | NAMA BAGIAN           |      |      |      |      |      | POS              | BAHAN | UKURAN JADI  | UKURAN KASAR | NO ID | F        |
| >  | 0                     | 6    | 30   | 120  | 400  | 1000 | PEKERJAAN LANJUT |       | NO ORDER     |              |       |          |
| <  | 6                     | 30   | 120  | 400  | 1000 | 2000 |                  |       |              |              |       |          |
| TOL  | +0,1                  | +0,2 | +0,3 | +0,5 | +0,8 | +1,2 |                  |       |              |              |       |          |
| <b>LANDASAN PENGUPAS</b>   |                       |      |      |      |      |      |                  |       | SKALA        | DIGAMBAR     | FEBRI | 10-04-23 |
|  |                       |      |      |      |      |      |                  |       | 1 : 5        | DIPERIKSA    |       |          |
|  |                       |      |      |      |      |      |                  |       |              | DISAHKAN     |       |          |
|  |                       |      |      |      |      |      |                  |       |              |              |       |          |
| POLITEKNIK NEGERI CILACAP<br>JURUSAN REKAYASA MESIN DAN INDUSTRI PERTANIAN |                       |      |      |      |      |      |                  |       | FORMAT<br>A4 |              |       |          |



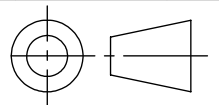
|  |                     |      |      |      |      |      |                  |       |              |              |       |          |
|--|---------------------|------|------|------|------|------|------------------|-------|--------------|--------------|-------|----------|
| 10   | PLAT LANDASAN UTAMA |      |      |      |      |      | -                | ST 37 | LIHAT DETAIL | -            | 3A    | -        |
| JML  | NAMA BAGIAN         |      |      |      |      |      | POS              | BAHAN | UKURAN JADI  | UKURAN KASAR | NO ID | F        |
| >  | 0                   | 6    | 30   | 120  | 400  | 1000 | PEKERJAAN LANJUT |       | NO ORDER     |              |       |          |
| <  | 6                   | 30   | 120  | 400  | 1000 | 2000 |                  |       |              |              |       |          |
| TOL  | +0,1                | +0,2 | +0,3 | +0,5 | +0,8 | +1,2 |                  |       |              |              |       |          |
| <b>PLAT LANDASAN UTAMA</b>   |                     |      |      |      |      |      |                  |       | SKALA        | DIGAMBAR     | FEBRI | 10-04-23 |
|  |                     |      |      |      |      |      |                  |       | 1 : 2        | DIPERIKSA    |       |          |
|  |                     |      |      |      |      |      |                  |       |              | DISAHKAN     |       |          |
| POLITEKNIK NEGERI CILACAP<br>JURUSAN REKAYASA MESIN DAN INDUSTRI PERTANIAN |                     |      |      |      |      |      |                  |       | FORMAT<br>A4 |              |       |          |



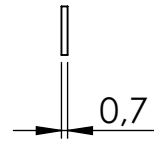
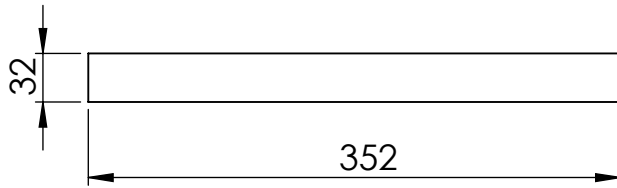
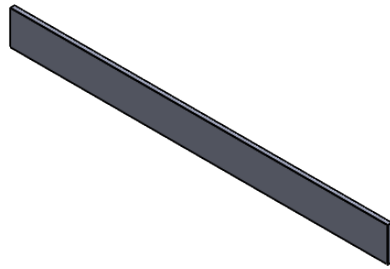
|  |                       |      |      |      |      |      |                  |       |              |              |       |          |
|--|-----------------------|------|------|------|------|------|------------------|-------|--------------|--------------|-------|----------|
| 2  | PLAT LANDASAN SAMPING |      |      |      |      |      | -                | ST 37 | LIHAT DETAIL | -            | 3B    | -        |
| JML  | NAMA BAGIAN           |      |      |      |      |      | POS              | BAHAN | UKURAN JADI  | UKURAN KASAR | NO ID | F        |
| >  | 0                     | 6    | 30   | 120  | 400  | 1000 | PEKERJAAN LANJUT |       | NO ORDER     |              |       |          |
| <  | 6                     | 30   | 120  | 400  | 1000 | 2000 |                  |       |              |              |       |          |
| TOL  | +0,1                  | +0,2 | +0,3 | +0,5 | +0,8 | +1,2 |                  |       |              |              |       |          |
| <b>PLAT LANDASAN SAMPING</b>   |                       |      |      |      |      |      |                  |       | SKALA        | DIGAMBAR     | FEBRI | 10-04-23 |
|  |                       |      |      |      |      |      |                  |       | 1 : 2        | DIPERIKSA    |       |          |
|  |                       |      |      |      |      |      |                  |       |              | DISAHKAN     |       |          |
| POLITEKNIK NEGERI CILACAP<br>JURUSAN REKAYASA MESIN DAN INDUSTRI PERTANIAN |                       |      |      |      |      |      |                  |       | FORMAT<br>A4 |              |       |          |



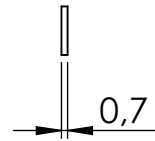
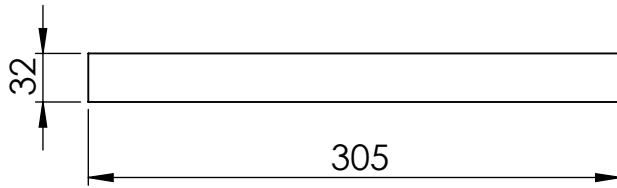
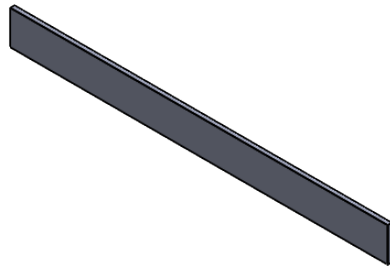
|  |                                 |      |       |              |              |           |                  |          |
|--|---------------------------------|------|-------|--------------|--------------|-----------|------------------|----------|
| 2  | PLAT PENGARAH BWH (LEFT/RIGHT)  | -    | ST 37 | LIHAT DETAIL | -            | 4E        | -                |          |
| 1  | PLAT PENGARAH BWH (BACK)        | -    | ST 37 | LIHAT DETAIL | -            | 4D        | -                |          |
| 1  | PLAT PENGARAH BWH (FRONT)       | -    | ST 37 | LIHAT DETAIL | -            | 4C        | -                |          |
| 2  | PLAT PENGARAH ATAS (LEFT/RIGHT) | -    | ST 37 | LIHAT DETAIL | -            | 4B        | -                |          |
| 2  | PLAT PENGARAH ATAS (FR/BACK)    | -    | ST 37 | LIHAT DETAIL | -            | 4A        | -                |          |
| JML  | Nama Bagian                     | POS  | BAHAN | UKURAN JADI  | UKURAN KASAR | NO ID     | F                |          |
| >  | 0                               | 6    | 30    | 120          | 400          | 1000      | PEKERJAAN LANJUT |          |
| <  | 6                               | 30   | 120   | 400          | 1000         | 2000      |                  |          |
| TOL  | +0,1                            | +0,2 | +0,3  | +0,5         | +0,8         | +1,2      |                  |          |
| <b>PENGARAH OUTPUT</b>   |                                 |      |       |              | SKALA        | DIGAMBAR  | FEBRI            | 10-04-23 |
|  |                                 |      |       |              | 1 : 5        | DIPERIKSA |                  |          |
|  |                                 |      |       |              |              | DISAHKAN  |                  |          |
|  |                                 |      |       |              |              |           |                  |          |
| POLITEKNIK NEGERI CILACAP<br>JURUSAN REKAYASA MESIN DAN INDUSTRI PERTANIAN |                                 |      |       |              | FORMAT<br>A4 |           |                  |          |



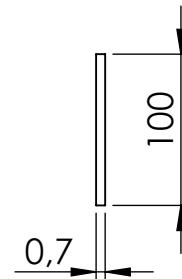
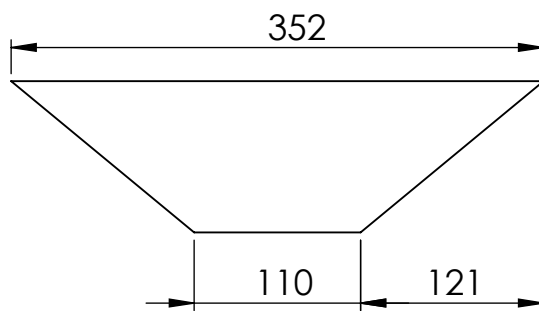
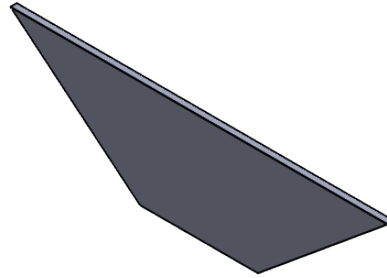




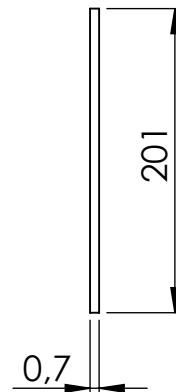
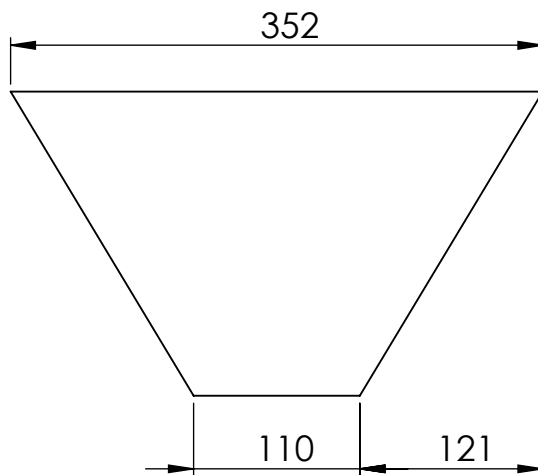
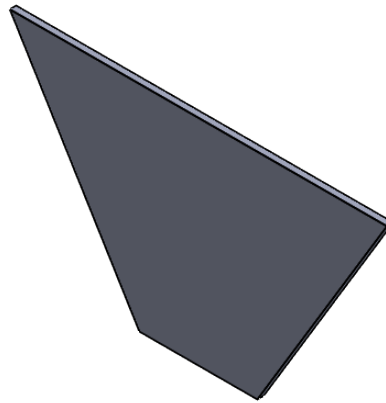
|  |                               |      |       |              |              |           |   |          |
|--|-------------------------------|------|-------|--------------|--------------|-----------|---|----------|
| 2  | PLAT PENGARAH ATAS (FRT/BACK) | -    | ST 37 | LIHAT DETAIL | -            | 4A        | -   |          |
| JML  | NAMA BAGIAN                   | POS  | BAHAN | UKURAN JADI  | UKURAN KASAR | NO ID     | F   |          |
| >  | 0                             | 6    | 30    | 120          | 400          | 1000      | PEKERJAAN LANJUT<br>NO ORDER<br> |          |
| <  | 6                             | 30   | 120   | 400          | 1000         | 2000      |   |          |
| TOL  | +0,1                          | +0,2 | +0,3  | +0,5         | +0,8         | +1,2      |   |          |
| <b>PLAT PENGARAH ATAS (FRONT/BACK)</b>                                     |                               |      |       |              | SKALA        | DIGAMBAR  | FEBRI   | 10-04-23 |
|  |                               |      |       |              | 1 : 5        | DIPERIKSA |   |          |
|  |                               |      |       |              |              | DISAHKAN  |   |          |
|  |                               |      |       |              |              |           |   |          |
| POLITEKNIK NEGERI CILACAP<br>JURUSAN REKAYASA MESIN DAN INDUSTRI PERTANIAN |                               |      |       |              | FORMAT<br>A4 |           |   |          |



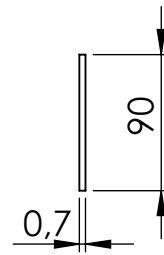
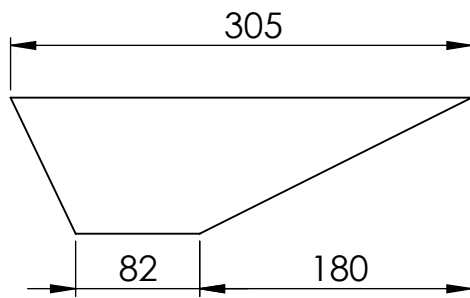
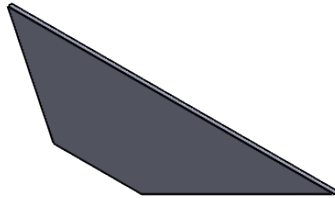
|  |                                 |      |       |              |              |           |   |          |
|--|---------------------------------|------|-------|--------------|--------------|-----------|---|----------|
| 2  | PLAT PENGARAH ATAS (LEFT/RIGHT) | -    | ST 37 | LIHAT DETAIL | -            | 4B        | -   |          |
| JML  | NAMA BAGIAN                     | POS  | BAHAN | UKURAN JADI  | UKURAN KASAR | NO ID     | F   |          |
| >  | 0                               | 6    | 30    | 120          | 400          | 1000      | PEKERJAAN LANJUT<br>NO ORDER<br> |          |
| <  | 6                               | 30   | 120   | 400          | 1000         | 2000      |   |          |
| TOL  | +0,1                            | +0,2 | +0,3  | +0,5         | +0,8         | +1,2      |   |          |
| <b>PLAT PENGARAH ATAS (LEFT/RIGHT)</b>                                     |                                 |      |       |              | SKALA        | DIGAMBAR  | FEBRI   | 10-04-23 |
|  |                                 |      |       |              | 1 : 5        | DIPERIKSA |   |          |
|  |                                 |      |       |              |              | DISAHKAN  |   |          |
|  |                                 |      |       |              |              |           |   |          |
| POLITEKNIK NEGERI CILACAP<br>JURUSAN REKAYASA MESIN DAN INDUSTRI PERTANIAN |                                 |      |       |              | FORMAT<br>A4 |           |   |          |



|  |                           |      |      |      |      |      |                  |              |              |       |          |
|--|---------------------------|------|------|------|------|------|------------------|--------------|--------------|-------|----------|
| 1  | PLAT PENGARAH BWH (FRONT) |      |      |      |      | -    | ST 37            | LIHAT DETAIL | -            | 4C    | -        |
| JML  | NAMA BAGIAN               |      |      |      |      | POS  | BAHAN            | UKURAN JADI  | UKURAN KASAR | NO ID | F        |
| >  | 0                         | 6    | 30   | 120  | 400  | 1000 | PEKERJAAN LANJUT | NO ORDER     |              |       |          |
| <  | 6                         | 30   | 120  | 400  | 1000 | 2000 |                  |              |              |       |          |
| TOL  | +0,1                      | +0,2 | +0,3 | +0,5 | +0,8 | +1,2 |                  |              |              |       |          |
| <b>PLAT PENGARAH BAWAH (FRONT)</b>   |                           |      |      |      |      |      |                  | SKALA        | DIGAMBAR     | FEBRI | 10-04-23 |
|  |                           |      |      |      |      |      |                  | 1 : 5        | DIPERIKSA    |       |          |
|  |                           |      |      |      |      |      |                  |              | DISAHKAN     |       |          |
| POLITEKNIK NEGERI CILACAP<br>JURUSAN REKAYASA MESIN DAN INDUSTRI PERTANIAN |                           |      |      |      |      |      |                  | FORMAT       |              |       |          |
|  |                           |      |      |      |      |      |                  | A4           |              |       |          |



|  |                          |      |       |              |              |           |   |          |
|--|--------------------------|------|-------|--------------|--------------|-----------|---|----------|
| 1  | PLAT PENGARAH BWH (BACK) | -    | ST 37 | LIHAT DETAIL | -            | 4D        | -   |          |
| JML  | NAMA BAGIAN              | POS  | BAHAN | UKURAN JADI  | UKURAN KASAR | NO ID     | F   |          |
| >  | 0                        | 6    | 30    | 120          | 400          | 1000      | PEKERJAAN LANJUT<br>NO ORDER<br> |          |
| <  | 6                        | 30   | 120   | 400          | 1000         | 2000      |   |          |
| TOL  | +0,1                     | +0,2 | +0,3  | +0,5         | +0,8         | +1,2      |   |          |
| <b>PLAT PENGARAH BAWAH (BACK)</b>  |                          |      |       |              | SKALA        | DIGAMBAR  | FEBRI   | 10-04-23 |
|  |                          |      |       |              | 1 : 5        | DIPERIKSA |   |          |
|  |                          |      |       |              |              | DISAHKAN  |   |          |
|  |                          |      |       |              |              |           |   |          |
| POLITEKNIK NEGERI CILACAP<br>JURUSAN REKAYASA MESIN DAN INDUSTRI PERTANIAN |                          |      |       |              | FORMAT<br>A4 |           |   |          |



|  |                                |      |       |              |              |           |       |          |
|--|--------------------------------|------|-------|--------------|--------------|-----------|-------|----------|
| 2  | PLAT PENGARAH BWH (LEFT/RIGHT) | -    | ST 37 | LIHAT DETAIL | -            | 4E        | -     |          |
| JML  | NAMA BAGIAN                    | POS  | BAHAN | UKURAN JADI  | UKURAN KASAR | NO ID     | F     |          |
| >  | 0                              | 6    | 30    | 120          | 400          | 1000      |       |          |
| <  | 6                              | 30   | 120   | 400          | 1000         | 2000      |       |          |
| TOL  | +0,1                           | +0,2 | +0,3  | +0,5         | +0,8         | +1,2      |       |          |
| <b>PLAT PENGARAH BAWAH (LEFT/RIGHT)</b>                                    |                                |      |       |              | SKALA        | DIGAMBAR  | FEBRI | 10-04-23 |
|  |                                |      |       |              | 1 : 5        | DIPERIKSA |       |          |
|  |                                |      |       |              |              | DISAHKAN  |       |          |
|  |                                |      |       |              |              |           |       |          |
| POLITEKNIK NEGERI CILACAP<br>JURUSAN REKAYASA MESIN DAN INDUSTRI PERTANIAN |                                |      |       |              | FORMAT<br>A4 |           |       |          |

## BIODATA PENULIS



Nama : Febri Nur Asgian  
Tempat, tanggal lahir : Cilacap, 03 Februari 2002  
NIM : 200203047  
Prodi : Diploma III Teknik Mesin  
Jurusan : Rekayasa Mesin dan Industri Pertanian  
Alamat : Jalan Pemuda RT03/RW03 Dondong, Kec. Kesugihan,  
Kab. Cilacap, Jawa Tengah  
Telephone/Hp : 088221437586  
E-mail : [febrinur115@gmail.com](mailto:febrinur115@gmail.com)  
Motto Hidup : Kesempatan tidak datang dua kali, lakukan sekarang atau  
tidak sama sekali

### **Riwayat Pendidikan:**

1. SMP Negeri 1 Kesugihan (2014-2017)
2. SMK Negeri 2 Cilacap (2017-2020)
3. Politeknik Negeri Cilacap (2020-2023)