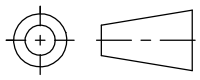

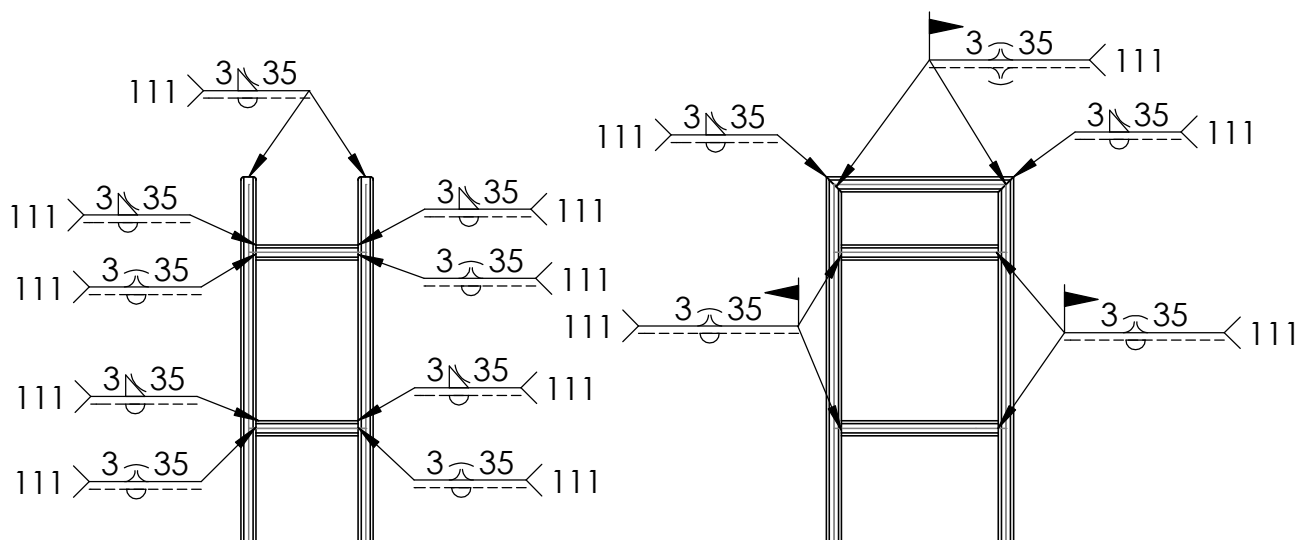
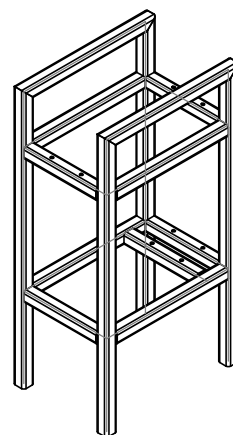
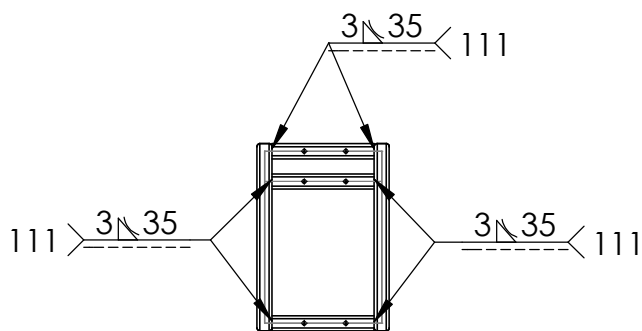
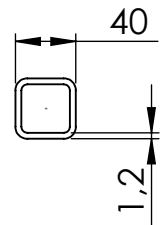
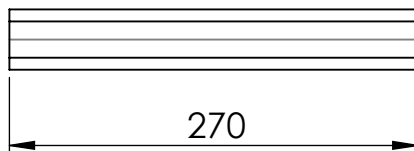
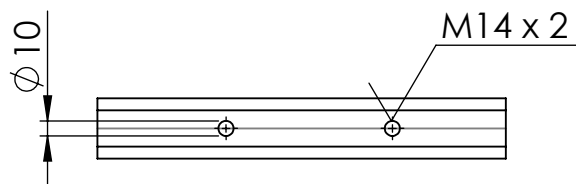
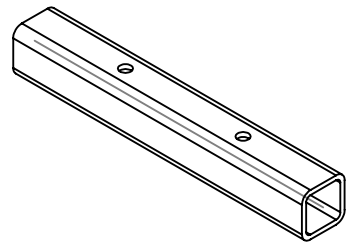


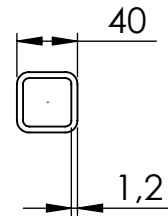
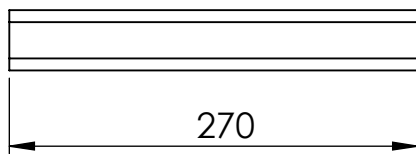
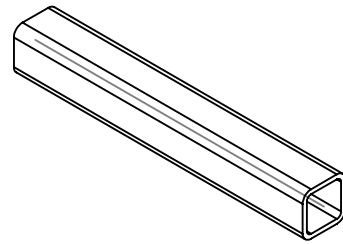
JML	NAMA BAGIAN						NO. ID	BAHAN	UKURAN JADI	KETERANGAN	
>	0	6	30	120	400	1000	PENGKERJAAN LANJUT PENGELASAN	NO. ORDER	PROYEKSI 		
<	6	30	120	400	1000	2000					
TOL	±0.1	±0.2	±0.3	±0.5	±0.8	±1.2					
UKURAN RANGKA PENGURAI								SKALA 1:20	DIGAMBAR		MAULANA
									DIPERIKSA		
									DISAHKAN		
 POLITEKNIK NEGERI CILACAP								FORMAT A4	SATUAN mm	No.02/TM/PNC	



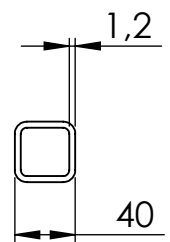
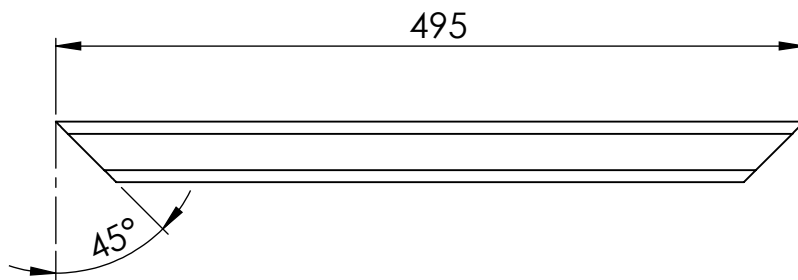
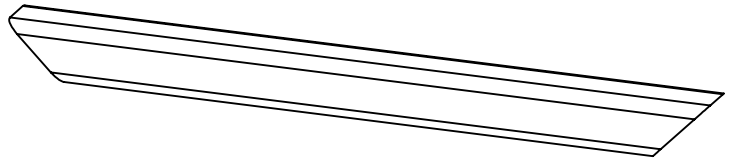
JML	NAMA BAGIAN						NO. ID	BAHAN	UKURAN JADI	KETERANGAN
>	0	6	30	120	400	1000	Pengerjaan Lanjut	NO. ORDER	PROYEKSI 	
<	6	30	120	400	1000	2000				
TOL	±0.1	±0.2	±0.3	±0.5	±0.8	±1.2				
ASSEMBLY LAS RANGKA PENGURAI								SKALA 1:20	DIGAMBAR	MAULANA
									DIPERIKSA	
									DISAHKAN	
POLITEKNIK NEGERI CILACAP								FORMAT A4	SATUAN mm	No.08/TM/PNC



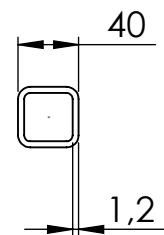
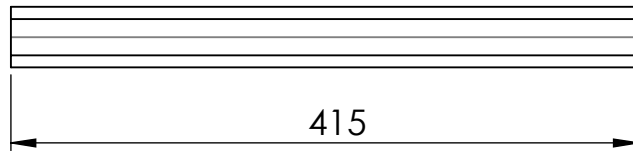
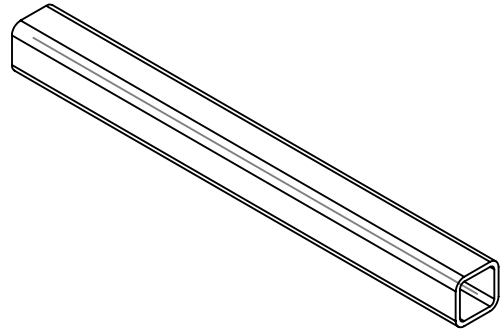
JML	NAMA BAGIAN						NO. ID	BAHAN	UKURAN JADI	KETERANGAN
>	0	6	30	120	400	1000	Pengerjaan Lanjut	NO. ORDER	PROYEKSI 	
<	6	30	120	400	1000	2000				
TOL	±0.1	±0.2	±0.3	±0.5	±0.8	±1.2				
DUDUKAN BEARING PENGURAI								SKALA 1:20	DIGAMBAR	MAULANA
									DIPERIKSA	
									DISAHKAN	
POLITEKNIK NEGERI CILACAP								FORMAT A4	SATUAN mm	No.08/TM/PNC



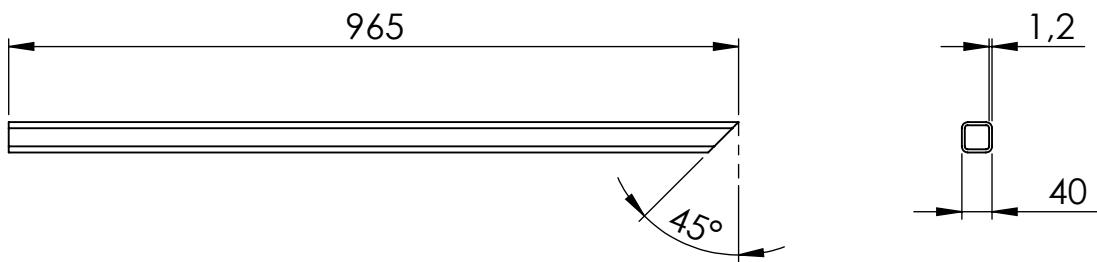
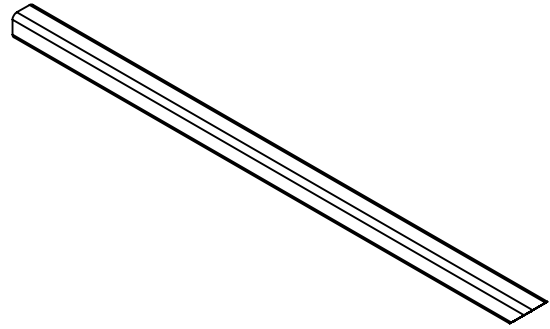
JML	NAMA BAGIAN						NO. ID	BAHAN	UKURAN JADI	KETERANGAN
>	0	6	30	120	400	1000	PENGERJAAN LANJUT	NO. ORDER	PROYEKSI 	
<	6	30	120	400	1000	2000				
TOL	±0.1	±0.2	±0.3	±0.5	±0.8	±1.2				
LEBAR BAWAH								SKALA 1:20	DIGAMBAR	MAULANA
									DIPERIKSA	
									DISAHKAN	
POLITEKNIK NEGERI CILACAP								FORMAT A4	SATUAN mm	No.08/TM/PNC



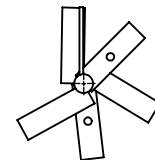
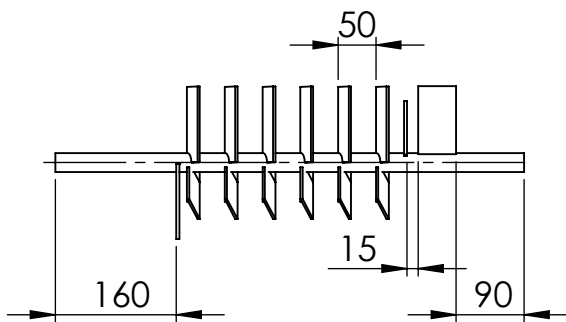
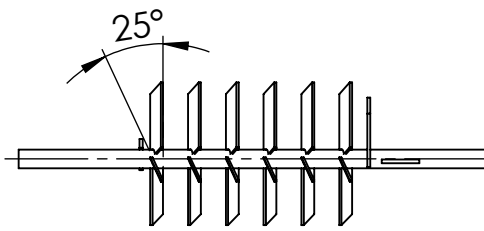
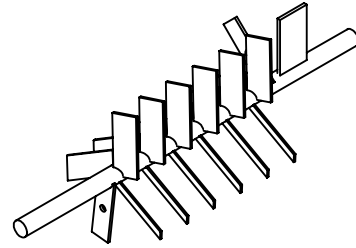
JML	NAMA BAGIAN						NO. ID	BAHAN	UKURAN JADI	KETERANGAN
>	0	6	30	120	400	1000	PENGERJAAN LANJUT	NO. ORDER	PROYEKSI 	
<	6	30	120	400	1000	2000				
TOL	±0.1	±0.2	±0.3	±0.5	±0.8	±1.2				
PANJANG ATAS								SKALA 1:20	DIGAMBAR	MAULANA
									DIPERIKSA	
									DISAHKAN	
POLITEKNIK NEGERI CILACAP								FORMAT A4	SATUAN mm	No.08/TM/PNC



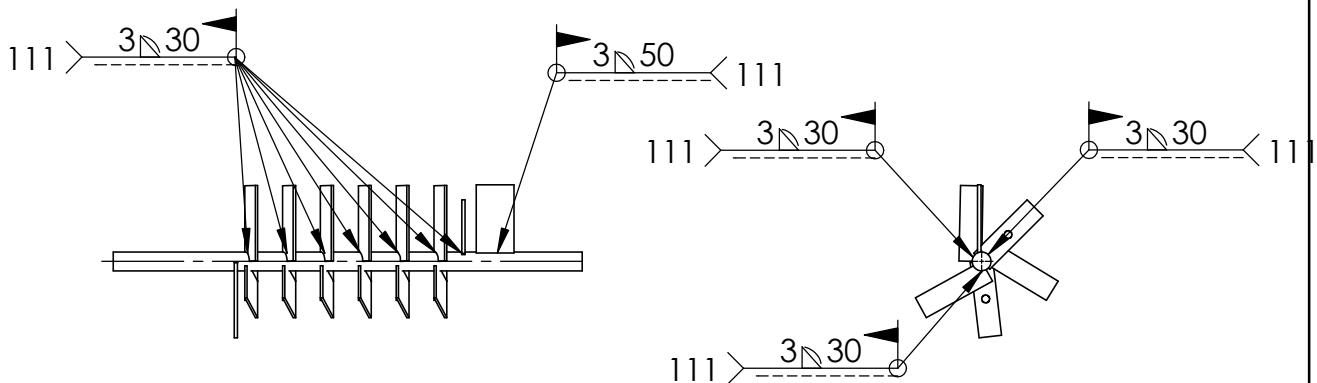
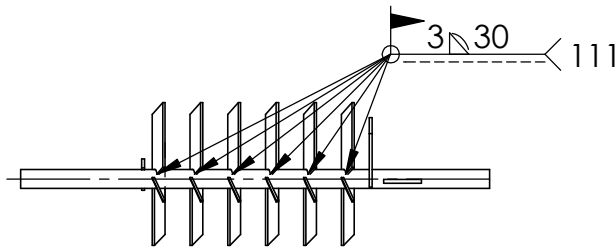
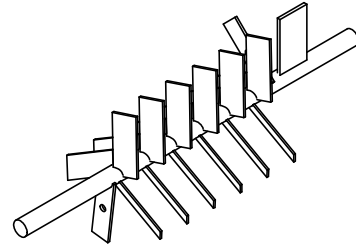
JML	NAMA BAGIAN						NO. ID	BAHAN	UKURAN JADI	KETERANGAN
>	0	6	30	120	400	1000	Pengerjaan Lanjut	NO. ORDER	PROYEKSI 	
<	6	30	120	400	1000	2000				
TOL	±0.1	±0.2	±0.3	±0.5	±0.8	±1.2				
PANJANG BAWAH								SKALA 1:20	DIGAMBAR	MAULANA
									DIPERIKSA	
									DISAHKAN	
POLITEKNIK NEGERI CILACAP								FORMAT A4	SATUAN mm	No.08/TM/PNC



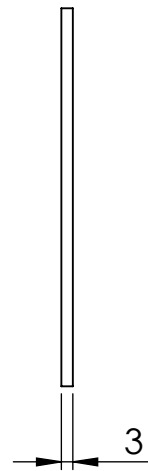
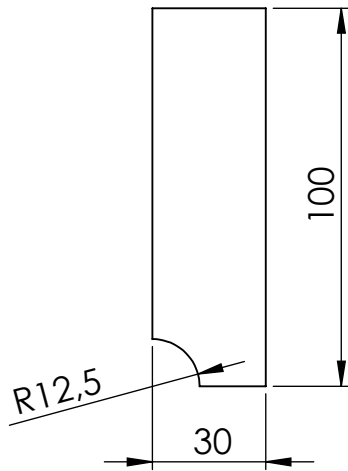
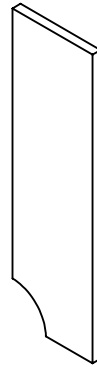
JML	NAMA BAGIAN						NO. ID	BAHAN	UKURAN JADI	KETERANGAN
>	0	6	30	120	400	1000	Pengerjaan Lanjut	NO. ORDER	PROYEKSI 	
<	6	30	120	400	1000	2000				
TOL	±0.1	±0.2	±0.3	±0.5	±0.8	±1.2				
TINGGI RANGKA								SKALA 1:20	DIGAMBAR	MAULANA
									DIPERIKSA	
									DISAHKAN	
POLITEKNIK NEGERI CILACAP								FORMAT A4	SATUAN mm	No.08/TM/PNC



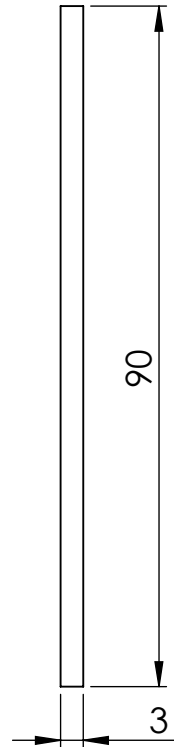
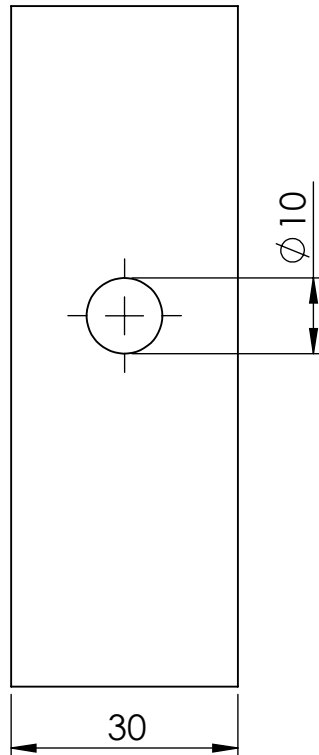
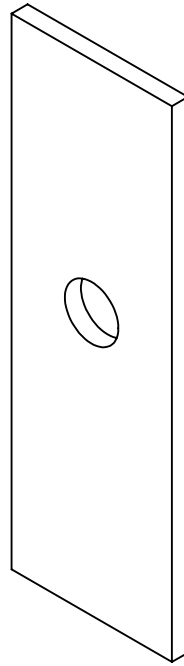
JML	NAMA BAGIAN						NO. ID	BAHAN	UKURAN JADI	KETERANGAN
>	0	6	30	120	400	1000	PENGKERJAAN LANJUT	NO. ORDER	PROYEKSI 	
<	6	30	120	400	1000	2000				
TOL	±0.1	±0.2	±0.3	±0.5	±0.8	±1.2				
<h1>ASSEMBLY RANGKA MESIN PEMBELAH BAMBU</h1>								SKALA 1:20	DIGAMBAR	MAULANA
									DIPERIKSA	
									DISAHKAN	
 POLITEKNIK NEGERI CILACAP								FORMAT A4	SATUAN mm	No.08/TM/PNC



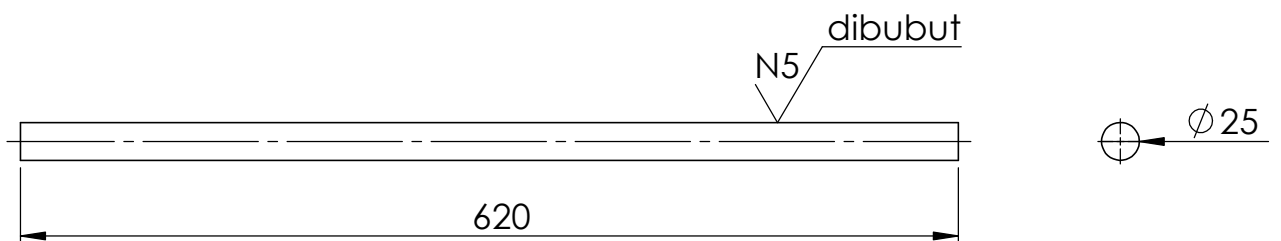
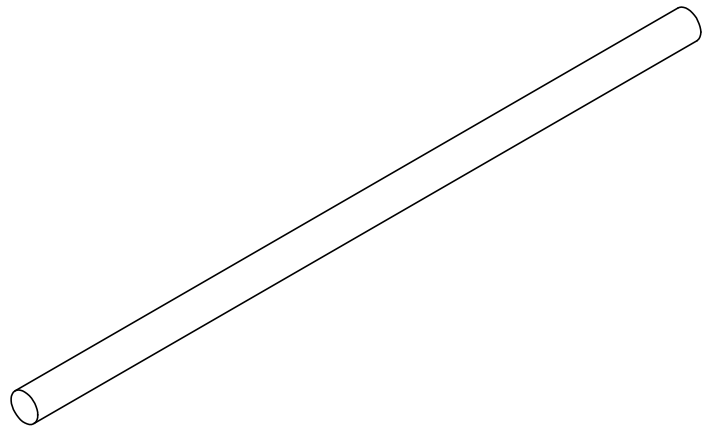
1	ASSEMBLY PENGURAI 1						R	MILD STEEL	LIHAT DETAIL	111 = SMAW
JML	NAMA BAGIAN						NO. ID	BAHAN	UKURAN JADI	KETERANGAN
>	0	6	30	120	400	1000	Pengerjaan Lanjut	NO. ORDER		
<	6	30	120	400	1000	2000				
TOL	±0.1	±0.2	±0.3	±0.5	±0.8	±1.2				
<h1>ASSEMBLY LAS PENGURAI 1</h1>								SKALA 1:10	DIGAMBAR	MAULANA
									DIPERIKSA	
									DISAHKAN	
POLITEKNIK NEGERI CILACAP								FORMAT A4	SATUAN mm	No.08/TM/PNC




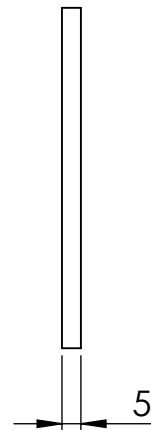
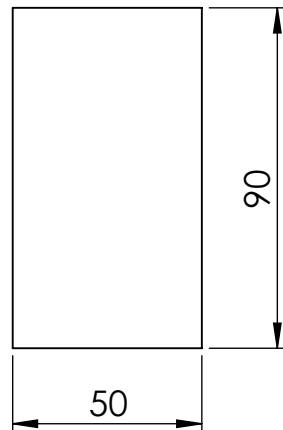
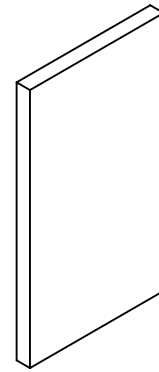
JML	NAMA BAGIAN						NO. ID	BAHAN	UKURAN JADI	KETERANGAN
>	0	6	30	120	400	1000	Pengerjaan Lanjut	NO. ORDER		
<	6	30	120	400	1000	2000				
TOL	±0.1	±0.2	±0.3	±0.5	±0.8	±1.2				
MATA PISAU PLAT								SKALA 1:2	DIGAMBAR	MAULANA
									DIPERIKSA	
									DISAHKAN	
POLITEKNIK NEGERI CILACAP								FORMAT A4	SATUAN mm	No.08/TM/PNC




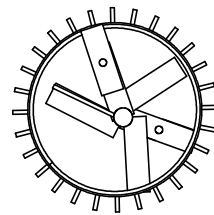
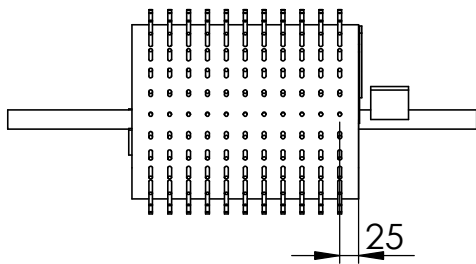
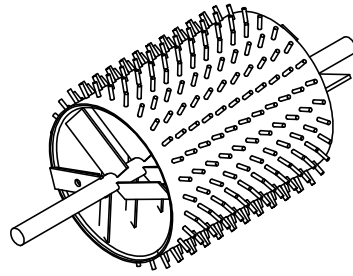
JML	NAMA BAGIAN						NO. ID	BAHAN	UKURAN JADI	KETERANGAN	
>	0	6	30	120	400	1000	Pengerjaan Lanjut	NO. ORDER	PROYEKSI 		
<	6	30	120	400	1000	2000					
TOL	± 0.1	± 0.2	± 0.3	± 0.5	± 0.8	± 1.2					
PLAT PENGUNCI PENGURAI								SKALA 1:1	DIGAMBAR		MAULANA
									DIPERIKSA		
									DISAHKAN		
POLITEKNIK NEGERI CILACAP								FORMAT A4	SATUAN mm	No.08/TM/PNC	



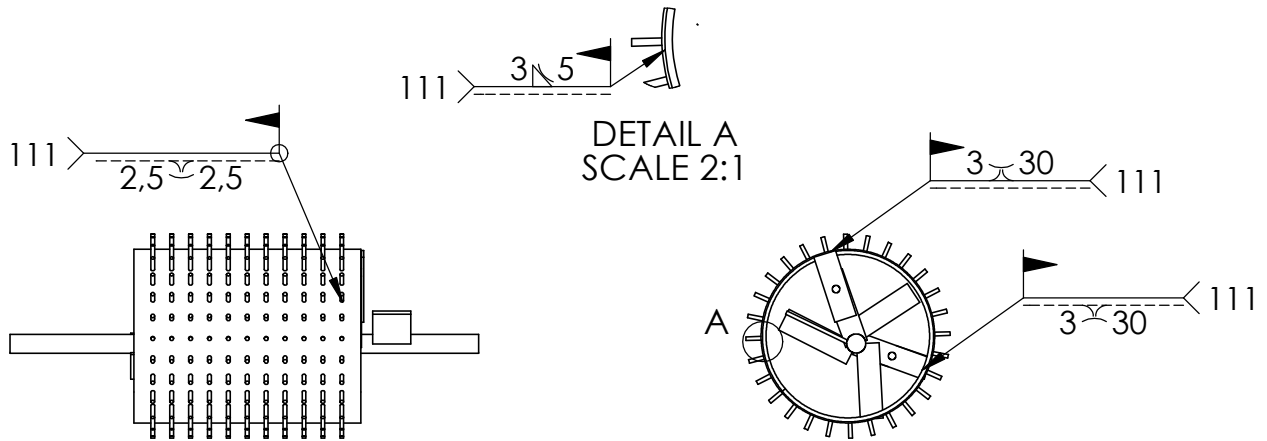
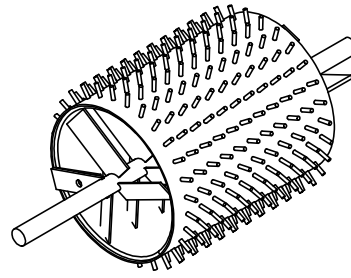
JML	NAMA BAGIAN						NO. ID	BAHAN	UKURAN JADI	KETERANGAN
>	0	6	30	120	400	1000	Pengerjaan Lanjut	NO. ORDER	PROYEKSI 	
<	6	30	120	400	1000	2000				
TOL	±0.1	±0.2	±0.3	±0.5	±0.8	±1.2				
POROS								SKALA 1:5	DIGAMBAR	MAULANA
									DIPERIKSA	
									DISAHKAN	
 POLITEKNIK NEGERI CILACAP								FORMAT A4	SATUAN mm	No.08/TM/PNC



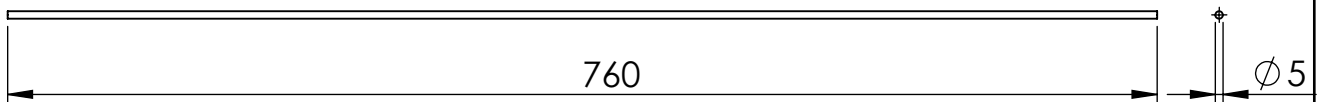
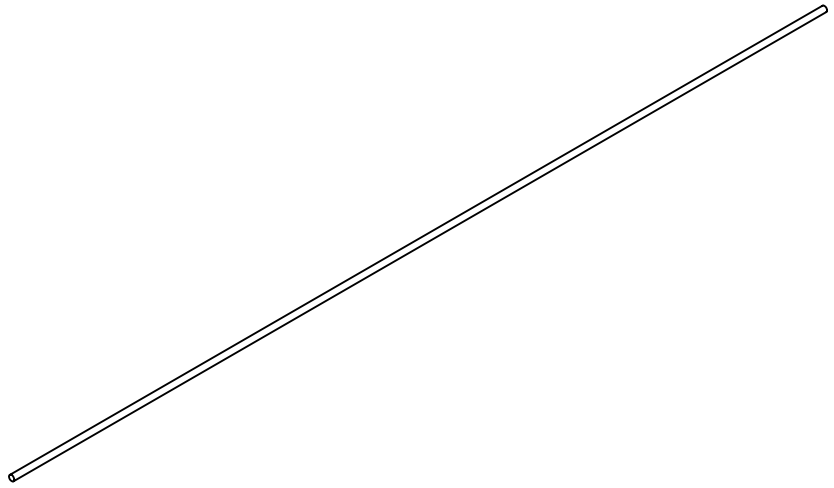
JML	NAMA BAGIAN						NO. ID	BAHAN	UKURAN JADI	KETERANGAN
>	0	6	30	120	400	1000	Pengerjaan Lanjut	NO. ORDER	PROYEKSI 	
<	6	30	120	400	1000	2000				
TOL	±0.1	±0.2	±0.3	±0.5	±0.8	±1.2				
SWEAPER								SKALA 1:2	DIGAMBAR	MAULANA
									DIPERIKSA	
									DISAHKAN	
 POLITEKNIK NEGERI CILACAP								FORMAT A4	SATUAN mm	No.08/TM/PNC

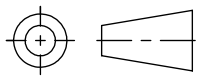



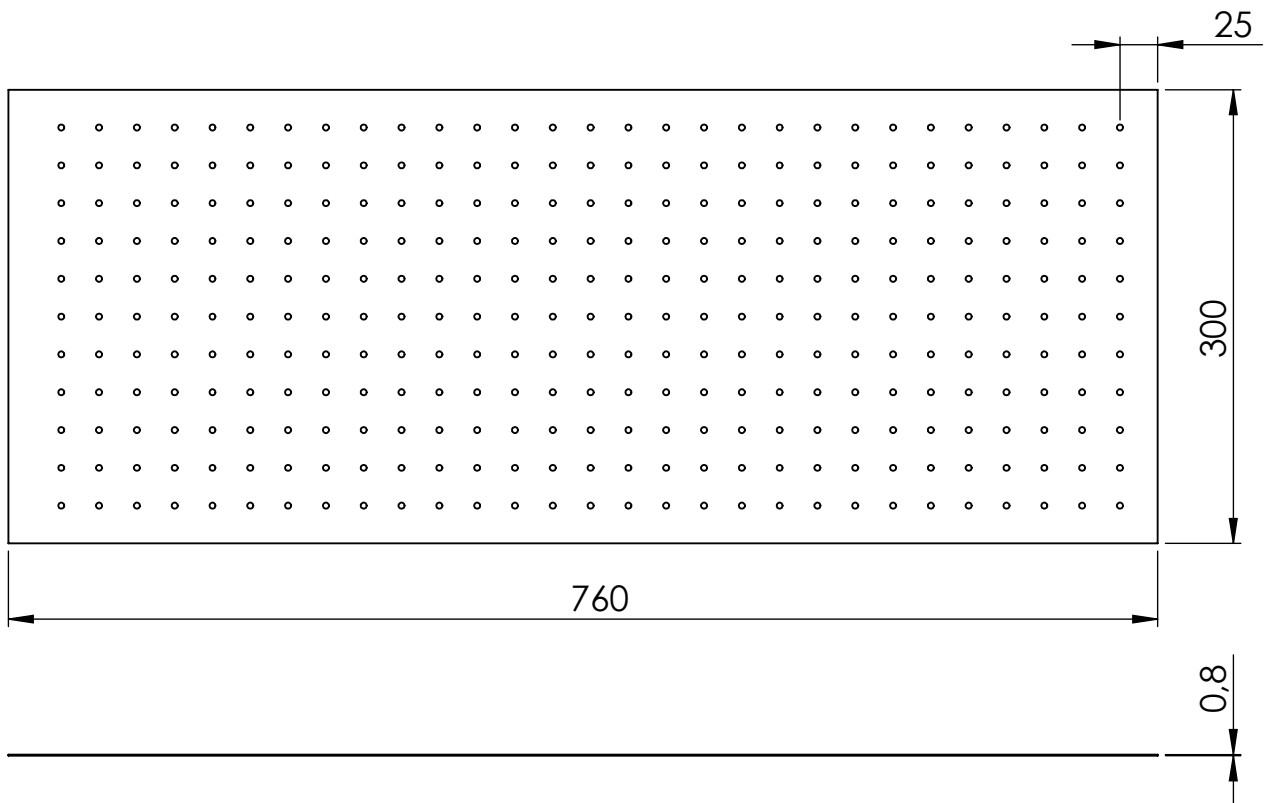
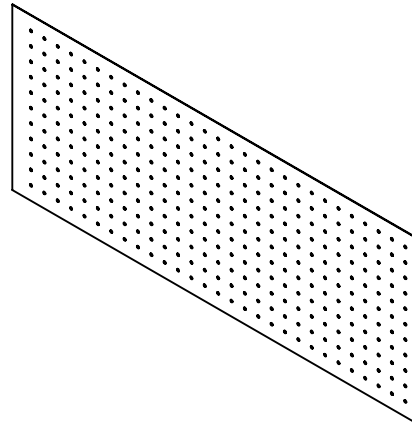
JML	NAMA BAGIAN						NO. ID	BAHAN	UKURAN JADI	KETERANGAN	
>	0	6	30	120	400	1000	Pengerjaan Lanjut	NO. ORDER	PROYEKSI 		
<	6	30	120	400	1000	2000					
TOL	±0.1	±0.2	±0.3	±0.5	±0.8	±1.2					
ASSEMBLY UKURAN PENGURAI 2								SKALA 1:10	DIGAMBAR		MAULANA
									DIPERIKSA		
									DISAHKAN		
POLITEKNIK NEGERI CILACAP								FORMAT A4	SATUAN mm	No.08/TM/PNC	



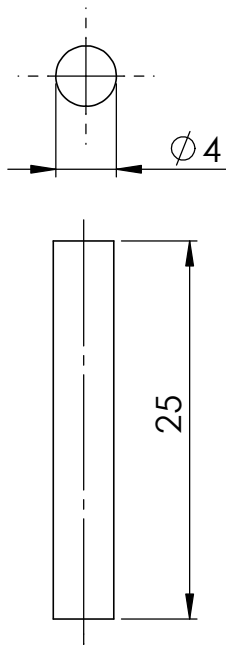
308	MATA PISAU RUJI						R	BAJA KARBON MENENGAH	LIHAT DETAIL	Pengelasan dilakukan sebanyak 308 111 = SMAW	
JML	NAMA BAGIAN						NO. ID	BAHAN	UKURAN JADI	KETERANGAN	
>	0	6	30	120	400	1000	Pengerjaan Lanjut	NO. ORDER			
<	6	30	120	400	1000	2000					
TOL	±0.1	±0.2	±0.3	±0.5	±0.8	±1.2					
ASSEMBLY LAS PENGURAI 2								SKALA 1:20	DIGAMBAR		MAULANA
									DIPERIKSA		
									DISAHKAN		
POLITEKNIK NEGERI CILACAP								FORMAT A4	SATUAN mm	No.08/TM/PNC	



JML	NAMA BAGIAN						NO. ID	BAHAN	UKURAN JADI	KETERANGAN
>	0	6	30	120	400	1000	Pengerjaan Lanjut	NO. ORDER	PROYEKSI 	
<	6	30	120	400	1000	2000				
TOL	±0.1	±0.2	±0.3	±0.5	±0.8	±1.2				
BESI BETON								SKALA 1:5	DIGAMBAR	MAULANA
									DIPERIKSA	
									DISAHKAN	
 POLITEKNIK NEGERI CILACAP								FORMAT A4	SATUAN mm	No.08/TM/PNC



JML	NAMA BAGIAN						NO. ID	BAHAN	UKURAN JADI	KETERANGAN	
>	0	6	30	120	400	1000	Pengerjaan Lanjut	NO. ORDER			
<	6	30	120	400	1000	2000					
TOL	±0.1	±0.2	±0.3	±0.5	±0.8	±1.2					
DUDUKAN MATA PISAU RUJI								SKALA 1:5	DIGAMBAR		MAULANA
									DIPERIKSA		
									DISAHKAN		
POLITEKNIK NEGERI CILACAP								FORMAT A4	SATUAN mm	No.08/TM/PNC	



JML	NAMA BAGIAN						NO. ID	BAHAN	UKURAN JADI	KETERANGAN	
>	0	6	30	120	400	1000	Pengerjaan Lanjut	NO. ORDER	PROYEKSI 		
<	6	30	120	400	1000	2000					
TOL	±0.1	±0.2	±0.3	±0.5	±0.8	±1.2					
MATA PISAU RUJI								SKALA 2:1	DIGAMBAR		MAULANA
									DIPERIKSA		
									DISAHKAN		
POLITEKNIK NEGERI CILACAP								FORMAT	SATUAN	No.08/TM/PNC	
								A4	mm		